



# **MECCA™ 2000**

---

**INTEGRATED ELECTRONIC  
PUBLISHING SYSTEM**

## ***System Administration***

**AMGRAF, INC.**

**MECCA™ 2000 Version 5.05**

© 2011 by Amgraf, Inc. All rights reserved.

These specifications are subject to change without notice.

OneForm and MECCA are trademarks of Amgraf, Inc.

All other brand and product names are or may be trademarks used to identify products or services of their respective owners.



1501 Oak Street • Kansas City, MO 64108-1424

Phone: (816) 474-4797 • Fax: (816) 842-4477

E-Mail: [info@amgraf.com](mailto:info@amgraf.com) • Internet: [www.amgraf.com](http://www.amgraf.com)

## Contents

---

### Contents

#### Chapter 1: Using Logo Panto Processing

Creating Directories to Hold Files .....	1
Valid Filenames .....	1
Controlling the Default Size of the Pantograph .....	1
Scanning Sections for a Pantograph .....	2
Checklist for Scanning the Sections .....	3
Checking for Dimension Limitation Problems .....	4
Logo Panto Processing .....	6
Custom Pantograph Examples .....	7

#### Chapter 2: Fonts

Basic 35 PostScript Fonts .....	10
FontBank Serif Fonts - Standard Book Families .....	16
FontBank Serif Fonts - Individual Fonts .....	26
FontBank San Serif Fonts - Standard Book Families .....	33
FontBank San Serif Fonts - Individual Fonts .....	44
FontBank Script and Calligraphy Fonts .....	46
FontBank Creative Display Fonts - Families .....	52
FontBank Creative Display Fonts - Individuals .....	55
FontBank Serif Display Fonts - UpperCase Only .....	63
FontBank Sans Serif Display Fonts - UpperCase Only .....	65
FontBank Creative Display Fonts - UpperCase Only .....	67
FontBank Fonts Sorted by FontBank Name: .....	71
FontBank Fonts Sorted by Similar To: .....	73

#### Chapter 3: Installing Fonts

Installing Type-1 Fonts .....	81
Assign Font Mnemonic and Style .....	82
Miscellaneous Information Concerning Fonts .....	84
Installing TrueType Fonts .....	86

#### Chapter 4: Processing Font Outlines

Processing a Single Font .....	89
Processing All Fonts .....	89

---

## Contents

---

### **Chapter 5: Aborting MECCA**

Stopping the MECCA System .....	91
---------------------------------	----

### **Chapter 6: Using the Xterm Window**

Line Printer Commands .....	93
-----------------------------	----

### **Chapter 7: Software Control Files for Spot Color**

Gray Color Table Format .....	95
Dot Angles .....	93
Layer Color Tables .....	95
Color Table Format .....	96

### **Chapter 8: UTF-8 Text Encoding Conversion Utility**

"unimap" command and File Preparation .....	99
Mapping Unicode Character to MECCA Special Character .....	100
Miscellaneous Information .....	101

## Chapter 1: Using Logo Panto Processing

Creating your own pantograph is very similar to creating your own font. You are doing just that, but the option allows it to be used through the draw box function. For step-and-repeat pantographs you must start with a scanned image.

Following are instructions on preparing the pantograph section.

When creating your sections all procedures must be followed in order for the font and actual displays to correctly generate. Please read through the entire procedure before attempting your first font.

### Creating Directories to Hold Files

---

Within your normal user login, create a directory *Pantos* to hold the pantographs. Within each directory create subdirectories which are the *numbers (up to 9-digits)* assigned to the patterns. All section files must reside in these subdirectories.

Always check your numbers in use, reusing a number will overwrite the existing panto font. Pantograph Fonts created by Amgraf are being assigned numbers from 001 to 699. When creating your own custom pantographs use numbers above 699. You can use up to 9-digit numbers.

Example: `/usr/amgraf/Pantos/035/p035.g`

#### Valid Filenames

Determine what section can be stepped to create the necessary pattern effect, scan and crop it. You are restricted to the following valid filenames when saving.

**Pantos** require a lowercase “p” followed by a number (up to 9-digits) representing the panto number and the extension of a “.g” **Example:** `p035.g`

### Controlling the Default Size of the Pantograph

---

When creating a pantograph from a scanned image it is necessary that the scan has an effective resolution of 720. This is done by enlarging or reducing the size of your section with Rotate/Scale. This means the default point size in the box menus of 10-point is also

enlarging or reducing in size. If the box default of 10 point should match the standard size that will be used, then the artwork must be enlarged or reduced before scanning. The chart below shows the recommended artwork enlargement/ reduction percentage for each resolution used during scanning. Note that your scanner may not support all of the resolutions listed, check the documentation or manufacturer for verification.

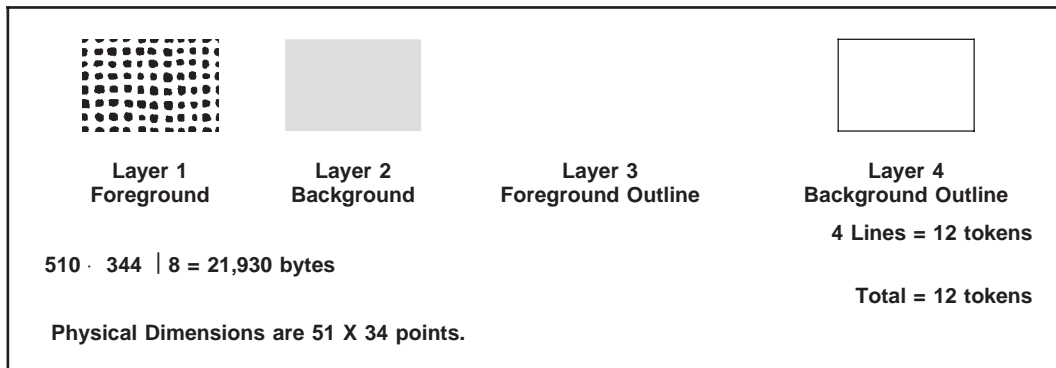
SCANNING SPECIFICATIONS					
Scanning Resolution	Original Artwork Size	Scanning Resolution	Original Artwork Size	Scanning Resolution	Original Artwork Size
50 dpi	1440 %	144 dpi	500 %	320 dpi	225 %
60 dpi	1200 %	150 dpi	480 %	360 dpi	200 %
72 dpi	1000 %	160 dpi	450 %	400 dpi	180 %
75 dpi	960 %	175 dpi	411 %	450 dpi	160 %
80 dpi	900 %	180 dpi	400 %	480 dpi	150 %
90 dpi	800 %	200 dpi	360 %	600 dpi	120 %
100 dpi	720%	216 dpi	333 %	800 dpi	90 %
120 dpi	600 %	240 dpi	300 %	900 dpi	80 %
133 dpi	541 %	300 dpi	240 %	1200 dpi	60 %

**Ratio of Scanner Resolution to Artwork Enlargement/Reduction %**

## Scanning Sections for a Pantograph

---

Panto Number 057 (*shown in Figures A-1*) has one section file. This panto was created by scanning the artwork and creating an “Area” for the background. As you can see Layer 3 is not needed with scanned foreground patterns.



**Figure A-1: Showing the Layers of the Panto “p057.g” Section File**

**Layers:**

- Foreground Raster must be on Layer 1.
- Background Area must be on Layer 2.
- Layer 3 is not used.
- Background drawing components on Layer 4.

## Checklist for Scanning the Sections

- 1) Scan and crop out the step and repeat section needed. The resolution can be 600 dpi if scanning a 1 inch square and 400 dpi for approximately 1 3/4 inch area.
- 2) Query and calculate the number of HPX/VPX bytes in your scanned image. If greater than 65,000 rescan at lower resolution.
- 3) Scale pattern to effectively become 720 dpi. (Divide the resolution by 720 to determine the percentage.)
- 4) Verify that the section is less than 100 points square after scaling.
- 5) Clean up pattern, if needed. Raster must be on Layer 1.
- 6) Draw a 0 weight invisible outline for the Background on Layer 4.
- 7) Create Area Fill, placing it on Layer 2.
- 8) Check to make sure everything is on the proper layers.
- 9) Group all layers and move the lower-left corner to X/Y coordinates of 0/0.
- 10) Save file under proper name for section.

CHECKLIST FOR SCANNED SECTIONS	
___ 1) Scan and Crop Pattern – Resolution used:	<input type="checkbox"/> 200 dpi <input type="checkbox"/> 400 dpi <input type="checkbox"/> 600 dpi   Other: _____
___ 2) Calculate Number of Bytes in Scanned Image:	$\frac{\text{Hpx}}{\text{Vpx}} \cdot \frac{\text{Width}}{\text{Depth}} \mid 8 < 65,000$ <i>(If not less than 65,000, must re-scan at lower resolution.)</i>
___ 3) Scale Size:	_____ / 720 <i>Scanned Resolution</i>
___ 4) Section width and depth in points.	_____ X _____ <i>Width                      Depth                      (Must be less than 100 points squared.)</i>
___ 5) Clean up Pattern using raster functions.	
___ 6) Draw Background Outline on Layer 4	
Total Token Value of Lines and Bezier Splines:	_____
	<i>(Must be less than 490.)</i>
___ 7) Put Area in Background Outline. Area must be on Layer 2.	
___ 8) Check Layers:	<input type="checkbox"/> Layer 1 – Foreground Raster <input type="checkbox"/> Layer 2 – Background Area <input type="checkbox"/> Layer 3 – Not Used <input type="checkbox"/> Layer 4 – Background Outline
___ 9) Move Baseline Alignment Point to X=0, Y=0	
___ 10) Section File is in Pantos/_____/p_____g	

Layer 4	Qty.
Lines = 3 tokens · _____	= _____
Bezier Splines = 7 tokens · _____	= _____
	Total _____

Once the section has been created, it is ready for panto processing. This is done using the MECCA 2000 Utility, **Logo Panto Processing**.

## Checking for Dimension Limitation Problems

---

If you are using a scanned image, it must have an effective resolution of 720 dpi. This can be achieved by using [Transform]'s {Rotate/Scale} and scaling the scanned image using the following formula:

**scanned resolution / 720**

If you do not do this step, the background area and the raster image sizes will not match. Use Query to verify the ERes.

There are limitations on physical size, and the number of vector points used when drawn. Before pixel editing or cleaning up a scanned section, check for dimension limitation problems such as exceeding file size.

### Limitations to Check

No section whether scanned or drawn can exceed 100 points square in dimensions.

A maximum of two Rasters can be used per pattern section. One for the Foreground and one for the Background. Before calculating number of bytes, merge multiple Foreground Rasters into one as well as multiple Background Rasters.

Each scanned image *cannot exceed 65,000 bytes*. To calculate the number of bytes in your image, crop the image and [Query] to get values for *hpx* and *vpv*. Use this formula to calculate the number of bytes:

- o  **$hpx \times vpv / 8 = \text{number of bytes}$**   
Number of bytes *must be less than 65,000*. If not, to correct the problem scan the pattern using a lower resolution or by scanning a smaller pattern/section.
- o The drawn outline area (per layer) *cannot exceed 490 tokens*. Determining how many tokens your outline contains is achieved by adding up the token values for each component used in the outline. Circles may be used only if approximated to Bezier Splines before areas are defined. Arcs, Circles, Vector Chains, and Cubic Splines **CANNOT BE USED**.

### Only Two Components Can Be Used to Draw Outlines

The following are the two components that can be used and their respective token values.

**Line = 3 tokens**

**Bezier Spline = 7 tokens**



(A rectangle can be used since it is really four individual lines that equal twelve token values. Complete circles that are converted to Bezier Splines create 4 Splines equaling 28 token values.)

### Layering Required for Sections

Proper layering is required for the sections to be processed correctly. Sections can be created either as a scanned raster or a drawn area and are exclusive to each other. You cannot use both a raster and area on the same patterned Foreground or Background.

Each section **MUST** have a Foreground (Layer 1) and a Background (Layer 2) and a Background Outline (Layer 4). If a background is not wanted, you can turn it off later by modifying the parameters file (see pages 21 through 26). When the pattern is needed to block out a screened area, you will need that background. The background can be square, rectangular or shaped around the edge of the foreground pattern. The area fill color does not matter, this will later be adjusted through the Border/Panto's Foreground/Background controls in the box program.

### Layers:

Foreground Raster must be on Layer 1.

Background Shaded Area or Raster must be on Layer 2.

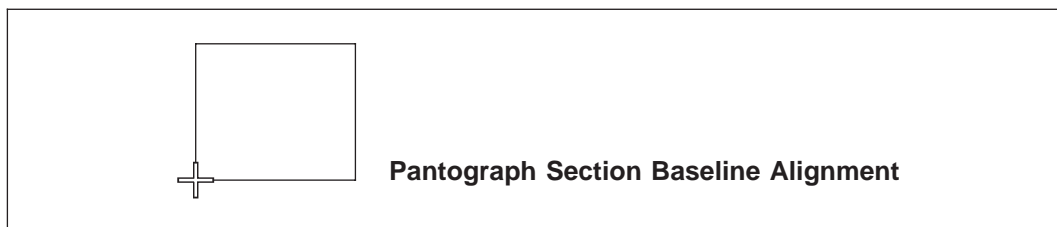
Layer 3 is not used.

Background 0 weight drawing components on Layer 4.

### Designating Baseline Alignment

Baselines of pantograph sections are determined by moving the lower left corner of the section to the X/Y coordinate of 0/0.

### Pantograph Baselines



**Figure A-5: Baseline Pick for Pantographs is Always the Lower Left Corner**

Move the lower left corner to 0/0 by following these steps:

- 1) Go to **[Layer]**. All layers must be ON.
- 2) Go to **[Group]** and **{All}** this will select the entire image.
- 3) Go to **[Move]{Move to Anywhere}** and use {Position Assistant}'s **{Intersection}** of and pick the lower left corner. (Lines must be depth ordered in front to pick)
- 4) When the prompt “pick new position” appears, type in **0 0 [Enter]**.

This will physically move that intersection pick to X=0, Y=0. This can be verified by picking the lower left corner and looking at the coordinates.

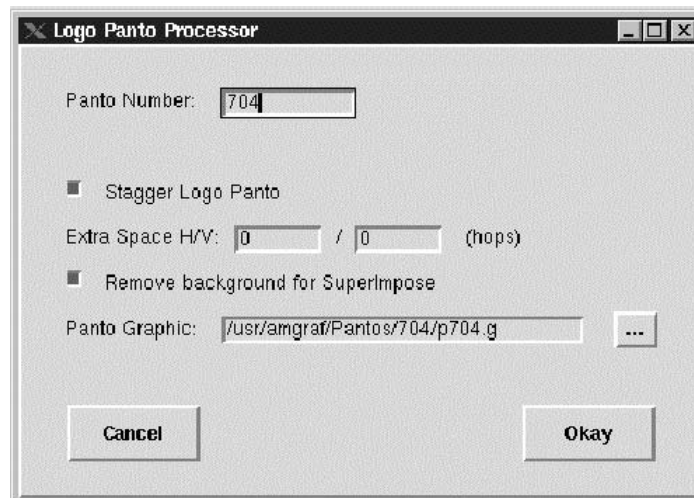
## Logo Panto Processing

---

Process the step-and-repeat panto automatically through the Start, MECCA 2000 Utilities, Logo Panto Processing option.



This will bring up a dialog box as shown:



Enter the panto number you wish to process and browse for the “g” section.

## Chapter 1: Using Logo Panto Processing

---

You can check staggered if you need the effect. Staggering will create a stair-stepped pattern, non-staggering will create rows and columns.

If you selected your pattern to be staggered, the second row is offset left and right by one-half of the horizontal spacing. Additional spacing between the logos can be added.







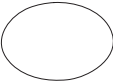
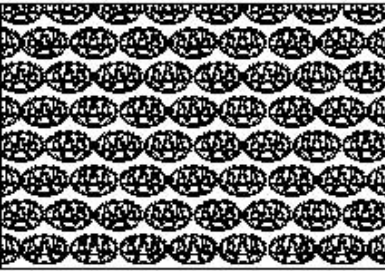
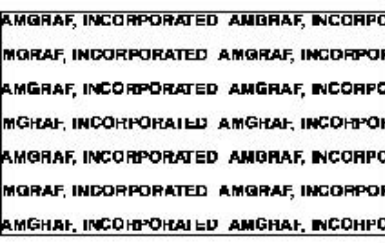


Selecting [Okay] will start the font processing. When it is finished you will be able to use the new panto from the box function the next time you start MECCA 2000.

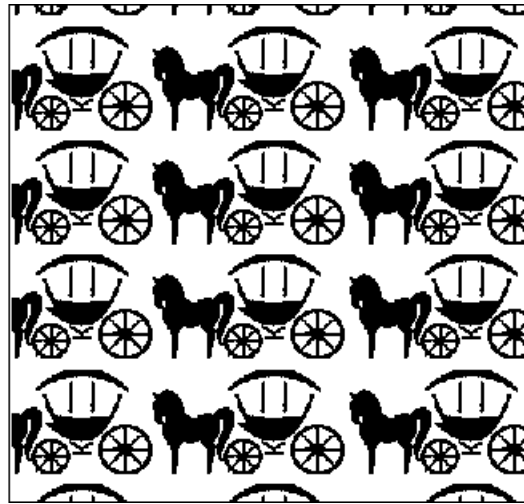
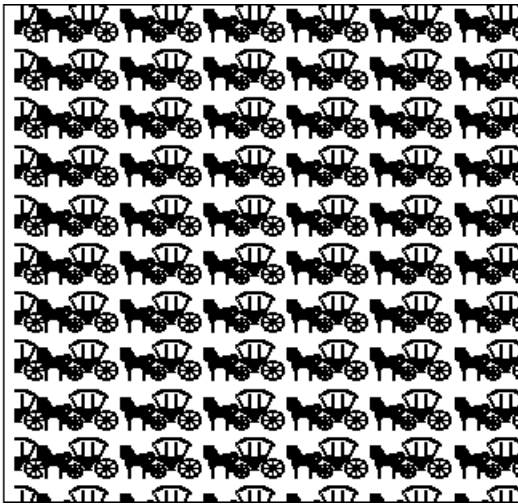
**Note:** If you have MECCA 2000 running while you are processing the panto, it will not appear in the panto list. The panto list is updated everytime MECCA 2000 starts by reading the file */usr/bin/amgraf/PostScript/laser.sub*.

## Custom Pantograph Examples

---

Creating custom pantographs allows you to use the pantograph through the Draw Box tool within any size of a box. The pantograph can also then be used in conjunction with the Superimpose (Hidden Message) feature.

Layer 1 = Foreground Scanned Logo Color 700 ERes @ 720 dpi	Layer 2 = Background Area Fill Color 600	Layer 4 Outline of Area Fill Color 700 Line Weight 0 Points	
			
Layer 1 = Foreground Scanned Logo Color 700 ERes @ 720 dpi	Layer 2 = Background Area Fill Color 600	Layer 4 Outline of Area Fill Color 700 Line Weight 0 Points	
			
Layer 1 = Foreground Scanned Logo Color 700 ERes @ 720 dpi	Layer 2 = Background Area Fill Color 600	Layer 4 Outline of Area Fill Color 700 Line Weight 0 Points	
<b>AMGRAF, INCORPORATED</b>			



## **Chapter 2: Fonts**

This chapter contains a display of all typefaces provided with all MECCA 2000 systems. The fonts are divided into two categories: 35 of the basic PostScript fonts and FontBank™ Fonts. The FontBank Fonts are downloadable and do not require the font to be resident on your output device. The basic 35 PostScript fonts are not downloadable and will need to be resident on your PostScript output device.

FontBank font software is the property of FontBank, Inc., and is provided to MECCA 2000 Users under the terms of a Software License Agreement. The complete License Agreement can be found on your MECCA 2000 CD-ROM.

## Basic 35 PostScript Fonts

---

ag, b, *AvantGarde-Demi*

**!"#\$%&\*'( ),-. /0123456789:;?ABCDEFGHIJ  
KLMNOPQRSTUVWXYZabcdefghijklmnop  
qrstuvwxyz{}£‘’“•”—**

ag, bi, *AvantGarde DemiOblique*

**!"#\$%&\*'( ),-. /0123456789:;?ABCDEFGHIJ  
KLMNOPQRSTUVWXYZabcdefghijklmnop  
qrstuvwxyz{}£‘’“•”—**

ag, i, *AvantGarde BookOblique*

**!"#\$%&\*'( ),-. /0123456789:;?ABCDEFGHIJ  
KLMNOPQRSTUVWXYZabcdefghijklmnop  
qrstuvwxyz{}£‘’“•”—**

ag, n, *AvantGarde-Book*

**!"#\$%&\*'( ),-. /0123456789:;?ABCDEFGHIJ  
KLMNOPQRSTUVWXYZabcdefghijklmnop  
qrstuvwxyz{}£‘’“•”—**

bk, b, *Bookman-Demi*

**!"#\$%&\*'( ),-. /0123456789:;?ABCDEF  
GHIJKLMNOPQRSTUVWXYZabcdefghijklmnop  
klmnopqrstuvwxyz{}£‘’“•”—**

bk, bi, *Bookman-DemiItalic*

**!"#\$%&\*'( ),-. /0123456789:;?ABCDEFG  
HIJKLMNOPQRSTUVWXYZabcdefghijklmnop  
mnopqrstuvwxyz{}£‘’“•”—**

bk, i, *Bookman-LightItalic*

!"#\$%&\*'( ), -. / 0 1 2 3 4 5 6 7 8 9 : ; ? A B C D E F G H  
I J K L M N O P Q R S T U V W X Y Z a b c d e f g h i j k l m n o  
p q r s t u v w x y z { } ¢ £ ‘ ’ “ • ” —

bk, n, *Bookman-Light*

!"#\$%&\*'( ), -. / 0 1 2 3 4 5 6 7 8 9 : ; ? A B C D E F G  
H I J K L M N O P Q R S T U V W X Y Z a b c d e f g h i j k l m  
n o p q r s t u v w x y z { } ¢ £ ‘ ’ “ • ” —

ce, b, *NewCenturySchlbk Bold*

!"#\$%&\*'( ), -. / 0 1 2 3 4 5 6 7 8 9 : ; ? A B C D E F G H  
I J K L M N O P Q R S T U V W X Y Z a b c d e f g h i j k l  
m n o p q r s t u v w x y z { } ¢ £ ‘ ’ “ • ” —

ce, bi, *NewCenturySchlbk BoldItalic*

!"#\$%&\*'( ), -. / 0 1 2 3 4 5 6 7 8 9 : ; ? A B C D E F G H  
I J K L M N O P Q R S T U V W X Y Z a b c d e f g h i j k l  
m n o p q r s t u v w x y z { } ¢ £ ‘ ’ “ • ” —

ce, i, *NewCenturySchlbk Italic*

!"#\$%&\*'( ), -. / 0 1 2 3 4 5 6 7 8 9 : ; ? A B C D E F G H I  
J K L M N O P Q R S T U V W X Y Z a b c d e f g h i j k l m n o  
p q r s t u v w x y z { } ¢ £ ‘ ’ “ • ” —

ce, n, *NewCenturySchlbk Roman*

!"#\$%&\*'( ), -. / 0 1 2 3 4 5 6 7 8 9 : ; ? A B C D E F G H I  
J K L M N O P Q R S T U V W X Y Z a b c d e f g h i j k l m n o  
p q r s t u v w x y z { } ¢ £ ‘ ’ “ • ” —

co, b, *Courier-Bold*

!"#\$%&\*'( ), -. / 0 1 2 3 4 5 6 7 8 9 : ; ? A B C D E F  
G H I J K L M N O P Q R S T U V W X Y Z a b c d e f g h i j k l m  
n o p q r s t u v w x y z { } ¢ £ ‘ ’ “ • ” —

co, bi, *Courier-BoldOblique*

**! " # \$ % & \* ' ( ) , - . / 0 1 2 3 4 5 6 7 8 9 : ; ? A B C D E F  
G H I J K L M N O P Q R S T U V W X Y Z a b c d e f g h i j k l m  
n o p q r s t u v w x y z { } ¢ £ ' ' " • " —**

co, i, *Courier-Oblique*

**! " # \$ % & \* ' ( ) , - . / 0 1 2 3 4 5 6 7 8 9 : ; ? A B C D E F  
G H I J K L M N O P Q R S T U V W X Y Z a b c d e f g h i j k l m  
n o p q r s t u v w x y z { } ¢ £ ' ' " • " —**

co, n, *Courier*

**! " # \$ % & \* ' ( ) , - . / 0 1 2 3 4 5 6 7 8 9 : ; ? A B C D E F  
G H I J K L M N O P Q R S T U V W X Y Z a b c d e f g h i j k l m  
n o p q r s t u v w x y z { } ¢ £ ' ' " • " —**

ge, b, *Helvetica-Bold*

**! " # \$ % & \* ' ( ) , - . / 0 1 2 3 4 5 6 7 8 9 : ; ? A B C D E F G H I  
J K L M N O P Q R S T U V W X Y Z a b c d e f g h i j k l m n o  
p q r s t u v w x y z { } ¢ £ ' ' " • " —**

ge, bi, *Helvetica-BoldOblique*

**! " # \$ % & \* ' ( ) , - . / 0 1 2 3 4 5 6 7 8 9 : ; ? A B C D E F G H I  
J K L M N O P Q R S T U V W X Y Z a b c d e f g h i j k l m n o  
p q r s t u v w x y z { } ¢ £ ' ' " • " —**

ge, i, *Helvetica-Oblique*

**! " # \$ % & \* ' ( ) , - . / 0 1 2 3 4 5 6 7 8 9 : ; ? A B C D E F G H I J  
K L M N O P Q R S T U V W X Y Z a b c d e f g h i j k l m n o p q  
r s t u v w x y z { } ¢ £ ' ' " • " —**

ge, n, *Helvetica*

**! " # \$ % & \* ' ( ) , - . / 0 1 2 3 4 5 6 7 8 9 : ; ? A B C D E F G H I J  
K L M N O P Q R S T U V W X Y Z a b c d e f g h i j k l m n o p q  
r s t u v w x y z { } ¢ £ ' ' " • " —**



hn, b, *Helvetica-Narrow-Bold*

!"#\$%&\*'( ),-./0123456789:;?ABCDEFGHIJKLMN  
OPQRSTUVWXYZabcdefghijklmnopqrstuvwxyz  
{ } ¢ £ ‘ ’ “ • ” —

hn, bi, *Helvetica-Narrow BoldOblique*

!"#\$%&\*'( ),-./0123456789:;?ABCDEFGHIJKLMN  
OPQRSTUVWXYZabcdefghijklmnopqrstuvwxyz  
{ } ¢ £ ‘ ’ “ • ” —

hn, i, *Helvetica-Narrow Oblique*

!"#\$%&\*'( ),-./0123456789:;?ABCDEFGHIJKLMN  
OPQRSTUVWXYZabcdefghijklmnopqrstuvwxyz{ }  
¢ £ ‘ ’ “ • ” —

hn, n, *Helvetica-Narrow*

!"#\$%&\*'( ),-./0123456789:;?ABCDEFGHIJKLMN  
OPQRSTUVWXYZabcdefghijklmnopqrstuvwxyz{ }  
¢ £ ‘ ’ “ • ” —

pa, b, *Palatino-Bold*

!"#\$%&\*'( ),-./0123456789:;?ABCDEFGHIJ  
KLMNOPQRSTUVWXYZabcdefghijklmnopqrstuvwxyz{ }  
¢ £ ‘ ’ “ • ” —

pa, bi, *Palatino-BoldItalic*

!"#\$%&\*'( ),-./0123456789:;?ABCDEFGHIJ  
KLMNOPQRSTUVWXYZabcdefghijklmnopqrstuvwxyz{ }  
¢ £ ‘ ’ “ • ” —

pa, i, *Palatino-Italic*

!"#\$%&\*'( ),-./0123456789:;?ABCDEFGHIJK  
LMNOPQRSTUVWXYZabcdefghijklmnopqrstuvwxyz{ }  
¢ £ ‘ ’ “ • ” —

pa, n, *Palatino-Roman*

!"#\$%&\*'( ),-./0123456789:;?ABCDEFGHIJ  
KLMNOPQRSTUVWXYZabcdefghijklmnop  
qrstuvwxyz{}£‘’“•”—

sym, n, *Symbol*

!.#.%&\*.( ),-./0123456789:;?.....ΦΓ...  
. . . . . T.Σ.....α↓.δεφ.....∞..π.  
. στ.. .. .. { } ∩ & . = .

ti, b, *Times-Bold*

**!"#\$%&\*'( ),-./0123456789:;?ABCDEFGHIJ  
KLMNOPQRSTUVWXYZabcdefghijklmnop  
qrstuvwxyz{}£‘’“•”—**

ti, bi, *Times-BoldItalic*

***!"#\$%&\*'( ),-./0123456789:;?ABCDEFGHIJ  
KLMNOPQRSTUVWXYZabcdefghijklmnopqr  
stuvwxyz{}£‘’“•”—***

ti, i, *Times-Italic*

*!"#\$%&\*'( ),-./0123456789:;?ABCDEFGHIJK  
LMNOPQRSTUVWXYZabcdefghijklmnopqrstu  
vwxyz{}£‘’“•”—*

ti, n, *Times-Roman*

**!"#\$%&\*'( ),-./0123456789:;?ABCDEFGHIJK  
LMNOPQRSTUVWXYZabcdefghijklmnopqrst  
uvwxyz{}£‘’“•”—**

za, n, *ZapfChancery MediumItalic*

***!"#\$%&\*'( ),-./0123456789:;?ABCDEFGHIJKLM  
NOPQRSTUVWXYZabcdefghijklmnopqrstu  
vwxyz{}£‘’“•”—***

## Chapter 2: Fonts

---

zd, n, ZapfDingbats



## FontBank Serif Fonts — Standard Book Families

---

accla, b, *Acclamation*

Similar To: Accolade Bold

**!"#\$%&\*'( ),-./0123456789:;?ABCDEFGHIJ  
KLMNOPQRSTUVWXYZabcdefghijklmnopqrstuvwxyz  
mnpqrstuvwxyz{}£‘’“”-**

accla, i, *AcclamItal*

Similar To: Accolade Bold

**!"#\$%&\*'( ),-./0123456789:;?ABCDEFGHI  
JKLMNOPQRSTUVWXYZabcdefghijklmnopqrstuvwxyz  
pqrstuvwxyz{}£‘’“”-**

antho, b, *Anthony*

Similar To: Albertus Extra Bold

**!"#\$%&\*'( ),-./0123456789:;?ABCDEFGHI  
JKLMNOPQRSTUVWXYZabcdefghijklmnopqrstuvwxyz  
rstuvwxyz{}£‘’“”-**

antho, bi, *AnthonyItal*

Similar To: Albertus Extra Bold

**!"#\$%&\*'( ),-./0123456789:;?ABCDEFGHI  
JKLMNOPQRSTUVWXYZabcdefghijklmnopqrstuvwxyz  
qrstuvwxyz{}£‘’“”-**

battl, b, *Battle*

**!"#\$%&\*'( ),-./0123456789:;?ABCDEFGHI  
JKLMNOPQRSTUVWXYZabcdefghijklmnopqrstuvwxyz  
nopqrstuvwxyz{}£‘’“”-**

battl, bi, *BattleItal*

**!"#\$%&\*'( ),-./0123456789:;?ABCDEFGHI  
JKLMNOPQRSTUVWXYZabcdefghijklmnopqrstuvwxyz  
nopqrstuvwxyz{}£‘’“”-**

bodon, b, *BodoniExtra*

Similar To: Bodoni Roman Ultra Bold

**!"#\$%&\*'( ),-./0123456789:;?ABCDEFGHIJ  
KLMNOPQRSTUVWXYZabcdefghijklmnopqrstuvwxyz  
{}£‘’“”-**

bodon, xb, *BodoniHeavy*

Similar To: Bodoni Ultra, Bodoni Roman Black

**!"#\$%&\*'( ),-./0123456789:;?ABCDEFGHIJ  
KLMNOPQRSTUVWXYZabcdefghijklmnopqrstuvwxyz  
ijklnopqrstuvwxyz{}£‘’“”-**

bodoo, n, *BodoniOpen*

Similar To: Academy Engraved, Bodoni Engraved

**! \$%&\*'( ),-./0123456789:;?ABCDEFGHIJKLMN  
OPQRSTUVWXYZabcdefghijklmnopqrstuvwxyz  
yz ç £ ‘ ’ “ ” -**

cache, b, *CacheExtraBold*

Similar To: Cushing, Revival

**!"#\$%&\*'( ),-./0123456789:;?ABCDEFGHIJ  
KLMNOPQRSTUVWXYZabcdefghijklmnopqrstuvwxyz  
rstuvwxyz{}£‘’“”-**

cache, xb, *CacheHeavy*

Similar To: Cushing, Revival

**!"#\$%&\*'( ),-./0123456789:;?ABCDEFGHIJ  
KLMNOPQRSTUVWXYZabcdefghijklmnopqrstuvwxyz  
pqrstuvwxyz{}£‘’“”-**

calen, n, *CalentAdBold*

Similar To: Caslon Bold, Caslon Adbold

**!"#\$%&\*'( ),-./0123456789:;?ABCDEFGHIJ  
KLMNOPQRSTUVWXYZabcdefghijklmnopqrstuvwxyz  
qrstuvwxyz{}£‘’“”-**

calen, i, *Monroe*

Similar To: Caslon Italic, Galliard

**! # \$ % & \* ' ( ) , - . / 0 1 2 3 4 5 6 7 8 9 : ; ? A B C D E F G H  
I J K L M N O P Q R S T U V W X Y Z a b c d e f g h i j k l  
m n o p q r s t u v w x y z € £ ‘ ’ -**

calen, b, *Caslon*

Similar To: Caslon Black, Dutch

**! " # \$ % & \* ' ( ) , - . / 0 1 2 3 4 5 6 7 8 9 : ; ? A B C D  
E F G H I J K L M N O P Q R S T U V W X Y Z a b c d e  
f g h i j k l m n o p q r s t u v w x y z { } € £ ‘ ’ “ ” -**

cleve, b, *Cleveland*

Similar To: Clearface Black

**! " # \$ % & \* ' ( ) , - . / 0 1 2 3 4 5 6 7 8 9 : ; ? A B C D E F G  
H I J K L M N O P Q R S T U V W X Y Z a b c d e f g h i j k  
l m n o p q r s t u v w x y z { } € £ ‘ ’ “ ” -**

cleve, bi, *ClevelandItalBold*

Similar To: Clearface Heavy Ital

**! " # \$ % & \* ' ( ) , - . / 0 1 2 3 4 5 6 7 8 9 : ; ? A B C D E F G H I  
J K L M N O P Q R S T U V W X Y Z a b c d e f g h i j k l m n  
o p q r s t u v w x y z { } € £ ‘ ’ “ ” -**

cleve, xbi, *ClevelandHeavyItal*

Similar To: Clearface Black Ital

**! " # \$ % & \* ' ( ) , - . / 0 1 2 3 4 5 6 7 8 9 : ; ? A B C D E F G  
H I J K L M N O P Q R S T U V W X Y Z a b c d e f g h i j k  
l m n o p q r s t u v w x y z { } € £ ‘ ’ “ ” -**

crimm, b, *Crimmon*

Similar To: Inscriptional, Canterbury, Cantoria Roman Extra Bold, Della Robbia

**! " # \$ % & \* ' ( ) , - . / 0 1 2 3 4 5 6 7 8 9 : ; ? A B C D E F G H I  
J K L M N O P Q R S T U V W X Y Z a b c d e f g h i j k l m n  
o p q r s t u v w x y z { } € £ ‘ ’ “ ” -**

crimm, bi, *CrimmonItal*

Similar To: Inscriptional, Canterbury, Cantoria Italic Extra Bold, Della Robbia

**!"#\$%&\*'( ),-./0123456789:;?ABCDEFGHI  
JKLMNOPQRSTUVWXYZabcdefghijklmnopqrstuvwxyz  
{}c£‘’“”-**

delav, b, *Delavan*

Similar To: Hawthorn, Romana Black Agency

**!"#\$%&\*'( ),-./0123456789:;?ABCDEFGHIJ  
KLMNOPQRSTUVWXYZabcdefghijklmnopqrstuvwxyz  
stuvwxyz{}c£‘’“”-**

delav, bi, *DelavanItal*

Similar To: Hawthorn, Romana Black Agency

**!"#\$%&\*'( ),-./0123456789:;?ABCDEFGHIJ  
KLMNOPQRSTUVWXYZabcdefghijklmnopqrstuvwxyz  
stuvwxyz{}c£‘’“”-**

gowde, b, *GowdieExtra*

Similar To: Goudy Extra Bold

**!"#\$%&\*'( ),-./0123456789:;?ABCDEFGHI  
JKLMNOPQRSTUVWXYZabcdefghijklmnopqrstuvwxyz  
qrstuvwxyz{}c£‘’“”-**

gowdi, n, *GowdieItalian*

Similar To: Goudy Italian

**!"#\$%&\*'( ),-./0123456789:;?ABCDEFGH  
IJKLMNOPQRSTUVWXYZabcdefghijklmnopqrstuvwxyz  
nopqrstuvwxyz{}c£‘’“”-**

gowdo, b, *GowdieOldStyle*

Similar To: Goudy Heavyface, Goudy Old Style

**!"#\$%&\*'( ),-./0123456789:;?ABCDEFG  
HIJKLMNOPQRSTUVWXYZabcdefghijklmnopqrstuvwxyz  
jklmnopqrstuvwxyz{}c£‘’“”**

jerna, b, *JernaBold*

Similar To: Joanna

**!"#\$%&\*'( ),-./0123456789:;?ABCDEFGHI  
JKLMNOPQRSTUVWXYZabcdefghijklmnop  
nopqrstuvwxyz[]£‘’“”-**

jerna, i, *JernaItal*

Similar To: Jessica

**!"#\$%&\*'( ),-./0123456789:;?ABCDEFGHI  
JKLMNOPQRSTUVWXYZabcdefghijklmnop  
pqrstuvwxyz[]£‘’“”-**

klung, b, *KlungBold*

Similar To: Korinna Heavy, Stubserif

**!"#\$%&\*'( ),-./0123456789:;?ABCDEFGHI  
JKLMNOPQRSTUVWXYZabcdefghijklmnop  
pqrstuvwxyz[]£‘’“”-**

klung, bi, *KlungItal*

Similar To: Korinna Italic Heavy, Stubserif

**!"#\$%&\*'( ),-./0123456789:;?ABCDEFGHI  
JKLMNOPQRSTUVWXYZabcdefghijklmnop  
pqrstuvwxyz[]£‘’“”-**

lynda, b, *LyndaBold*

Similar To: Cochin Bold, Le Cochin, Liberty

**!"#\$%&\*'( ),-./0123456789:;?ABCDEFGHI  
JKLMNOPQRSTUVWXYZabcdefghijklmnop  
jklmnopqrstuvwxyz[]£‘’“”-**

lynda, bi, *LyndaItal*

Similar To: Cochin Bold, Le Cochin, Liberty

**!"#\$%&\*'( ),-./0123456789:;?ABCDEFGHI  
JKLMNOPQRSTUVWXYZabcdefghijklmnop  
hijklmnopqrstuvwxyz[]£‘’“”-**



mercy, b, *MercyBold*

Similar To: Modern, Modern Wide Roman, Claire News Bold

**!"#\$%&\*'( ),-./0123456789:;?ABCDEFGHIJ  
KLMNOPQRSTUVWXYZabcdefghijklmnopqrstuvwxyz  
{}£‘’“”-**

mercy, bi, *MercyItal*

Similar To: Modern, Modern Wide Italic, Claire New Bold Italic

**!"#\$%&\*'( ),-./0123456789:;?ABCDEFGHIH  
IJKLMNOPQRSTUVWXYZabcdefghijklmnopqrstuvwxyz  
nopqrstuvwxyz{}£‘’“”-**

quidb, b, *QuidBold*

Similar To: Friz Quadrata, Katrina Incised

**!"#\$%&\*'( ),-./0123456789:;?ABCDEFGH  
IJKLMNOPQRSTUVWXYZabcdefghijklmnopqrstuvwxyz  
lmnopqrstuvwxyz{}£‘’“”-**

quidb, bi, *QuidItal*

Similar To: Friz Quadrata, Katrina Incised

**!"#\$%&\*'( ),-./0123456789:;?ABCDEFGH  
IJKLMNOPQRSTUVWXYZabcdefghijklmnopqrstuvwxyz  
lmnopqrstuvwxyz{}£‘’“”-**

raste, n, *RastenMedium*

**!#\$%&\*'( ),-./0123456789:;?ABCDEFGHIJKLM  
NOPQRSTUVWXYZabcdefghijklmnopqrstuvwxyz  
xyz c£‘’ -**

raste, b, *Rasten*

**!"#\$%&\*'( ),-./0123456789:;?ABCDEFGHIJK  
LMNOPQRSTUVWXYZabcdefghijklmnopqrstuvwxyz  
tuvwxyz{}£‘’“”-**

rillo, b, *RilloHeavy*

**!"#\$%&\*'( ),-./0123456789:;?ABCDEFGHIH  
IJKLMNOPQRSTUVWXYZabcdefghijklmnop  
opqrstuvwxyz{}£‘’“”-**

rillo, bi, *RilloItal*

**!"#\$%&\*'( ),-./0123456789:;?ABCDEFGHIH  
IJKLMNOPQRSTUVWXYZabcdefghijklmnop  
opqrstuvwxyz{}£‘’“”-**

rolan, b, *Roland*

Similar To: Rockwell, Geometric Slapserif, Rockwell Roman Extra Bold

**!"#\$%&\*'( ),-./0123456789:;?ABCDEFGHI  
GHIJKLMNOPQRSTUVWXYZabcdefghijklmnop  
ijklmnopqrstuvwxyz{}£‘’“”-**

rolan, bi, *RolandItal*

Similar To: Rockwell, Geometric Slapserif, Rockwell Roman Extra Bold

**!"#\$%&\*'( ),-./0123456789:;?ABCDEFGHI  
GHIJKLMNOPQRSTUVWXYZabcdefghijklmnop  
ijklmnopqrstuvwxyz{}£‘’“”-**

sanch, b, *Sanchion*

Similar To: Signature Black

**!"#\$%&\*'( ),-./0123456789:;?ABCDEFGHI  
HIJKLMNOPQRSTUVWXYZabcdefghijklmnop  
nopqrstuvwxyz{}£‘’“”-**

sanch, bi, *SanchionItal*

Similar To: Signature Black

**!"#\$%&\*'( ),-./0123456789:;?ABCDEFGHI  
HIJKLMNOPQRSTUVWXYZabcdefghijklmnop  
nopqrstuvwxyz{}£‘’“”-**

dynam, b, *Dynamic*

Similar To: Signature Bold

**!"#\$%&\*'( ),-./0123456789:;?ABCDEFGHIJKLMN  
OPQRSTUVWXYZabcdefghijklmnopqrstuvwxyz  
{ }€‘’“”-**

dynam, bi, *DynamicItal*

Similar To: Signature Bold

**!"#\$%&\*'( ),-./0123456789:;?ABCDEFGHIJKLMN  
OPQRSTUVWXYZabcdefghijklmnopqrstuvwxyz  
z {}€‘’“”-**

dynam, xb, *SintoHeavy*

Similar To: Signature Black

**!"#\$%&\*'( ),-./0123456789:;?ABCDEFGHIJK  
LMNOPQRSTUVWXYZabcdefghijklmnopqrstuvwxyz  
uvwxyz {}€‘’“”-**

saren, b, *SarenBlack*

Similar To: Seagull

**!"#\$%&\*'( ),-./0123456789:;?ABCDEFGHIJ  
KLMNOPQRSTUVWXYZabcdefghijklmnopqrstuvwxyz  
rstuvwxyz {}€‘’“”-**

saren, bi, *SarenItal*

Similar To: Seagull

**!"#\$%&\*'( ),-./0123456789:;?ABCDEFGHIJ  
KLMNOPQRSTUVWXYZabcdefghijklmnopqrstuvwxyz  
rstuvwxyz {}€‘’“”-**

talon, b, *TalonBold*

Similar To: Dutch, Trooper, Toledo

**!"#\$%&\*'( ),-./0123456789:;?ABCDEFGHIJ  
KLMNOPQRSTUVWXYZabcdefghijklmnopqrstuvwxyz  
stuvwxyz {}€‘’“”-**

talon, bi, *TalonItal*

Similar To: Dutch, Trooper Roman Oblique

**!"#\$%&\*'( ),-./0123456789:;?ABCDEFGHIJ  
KLMNOPQRSTUVWXYZabcdefghijklmnopqrstuvwxyz  
c£‘’“”-**

tanbu, n, *TanbulBlack*

Similar To: Times New Roman Bold

**!"#\$%&\*'( ),-./0123456789:;?ABCDEFGHIJKL  
MNOPQRSTUVWXYZabcdefghijklmnopqrstuvwxyz  
vwxyz {} c£‘’“”-**

tanbu, b, *TanbulHeavy*

Similar To: Times Extra Bold

**!"#\$%&\*'( ),-./0123456789:;?ABCDEFGHI  
IJKLMNOPQRSTUVWXYZabcdefghijklmnopqrstuvwxyz  
pqrstuvwxyz {} c£‘’“”-**

tanbu, bi, *TanbulItal*

Similar To: Times New Roman Bold

**!"#\$%&\*'( ),-./0123456789:;?ABCDEFGHIJ  
KLMNOPQRSTUVWXYZabcdefghijklmnopqrstuvwxyz  
qrstuvwxyz {} c£‘’“”-**

typer, b, *TyperHeavy*

Similar To: Typewriter Heavy

**!"#\$%&\*'( ),-./0123456789:;?ABCDE  
FGHIJKLMNOPQRSTUVWXYZabcdef  
ghijklmnopqrstuvwxyz {} c£‘’“”-**

typer, bi, *TyperItal*

Similar To: Typewriter Heavy Italic

**!"#\$%&\*'( ),-./0123456789:;?ABCDE  
FGHIJKLMNOPQRSTUVWXYZabcdef  
ghijklmnopqrstuvwxyz {} c£‘’“”-**

wiste, m, *WistenMedium*

Similar To: Winslow, Windsor

**! # \$ % & \* ' ( ) , - . / 0 1 2 3 4 5 6 7 8 9 : ; ? A B C D E F G H I J  
K L M N O P Q R S T U V W X Y Z a b c d e f g h i j k l m n o  
p q r s t u v w x y z ¢ £ ‘ ’ -**

wiste, b, *WistenBold*

Similar To: Winslow, Windsor

**! " # \$ % & \* ' ( ) , - . / 0 1 2 3 4 5 6 7 8 9 : ; ? A B C D E F  
G H I J K L M N O P Q R S T U V W X Y Z a b c d e f g h  
i j k l m n o p q r s t u v w x y z { } ¢ £ ‘ ’ “ ”**

## Individual Serif Fonts

---

acmef, b, *AcmeFont*

Similar To: Aachen Bold

**! \$ % & \* ' ( ) , - . / 0 1 2 3 4 5 6 7 8 9 : ; ? A B C D E F G H I J  
K L M N O P Q R S T U V W X Y Z a b c d e f g h i j k l m n o p  
q r s t u v w x y z € £ ‘ ’ “ ” –**

bandi, n, *Bandicoot*

Similar To: Benguiat Book

**! \$ % & \* ' ( ) , - . / 0 1 2 3 4 5 6 7 8 9 : ; ? A B C D E F G H I J  
K L M N O P Q R S T U V W X Y Z a b c d e f g h i j k l m n o p  
q r s t u v w x y z € £ ‘ ’ “ ” –**

baske, b, *Baskerville*

Similar To: Baskerline, Baskerville Bold

**! " # \$ % & \* ' ( ) , - . / 0 1 2 3 4 5 6 7 8 9 : ; ? A B C D E F G H  
I J K L M N O P Q R S T U V W X Y Z a b c d e f g h i j k l m n  
o p q r s t u v w x y z { } € £ ‘ ’ “ ” –**

benso, b, *Benson*

Similar To: Bembo, Griffo, Aldine

**! " # \$ % & \* ' ( ) , - . / 0 1 2 3 4 5 6 7 8 9 : ; ? A B C D E F G  
H I J K L M N O P Q R S T U V W X Y Z a b c d e f g h i  
j k l m n o p q r s t u v w x y z { } € £ ‘ ’ “ ” –**

berin, b, *Bering*

Similar To: Berling Bold

**! " # \$ % & \* ' ( ) , - . / 0 1 2 3 4 5 6 7 8 9 : ; ? A B C D E F G H I  
J K L M N O P Q R S T U V W X Y Z a b c d e f g h i j k l m n  
o p q r s t u v w x y z { } € £ ‘ ’ “ ” –**

clare, xb, *Clarendon*

Similar To: Clarion, Clarendon Black

**!"#\$%&\*'( ),-./0123456789:;?ABCDEFGHI  
FGHIJKLMNOPQRSTUVWXYZabcd  
efghijklmnopqrstuvwxyz{}£“”-**

cohes, b, *Cohesion*

Similar To: Contact

**!"#\$%&\*'( ),-./0123456789:;?ABCDEFGHIJKLMNO  
PQRSTUVWXYZabcdefghijklmnopqrstu  
vwxyz{}£“”-  
-**

commo, b, *Commons*

Similar To: Congress Black

**!"#\$%&\*'( ),-./0123456789:;?ABCDEFGHI  
JKLMNOPQRSTUVWXYZabcdefghijklmnop  
qrstuvwxyz{}£“”-**

cools, xb, *Coolsville*

Similar To: Cooper Black, Pabst, Pittsburgh Black

**! \$%&\* ( ),-./ 0123456789:; ABCDEFG  
H IJKLMNOPQRSTUVWXYZabcdefg  
h ijklmnopqrstuvwxyz ç£ “**

deten, b, *Detente*

Similar To: Jenson Extra Bold

**!"#\$%&\*'( ),-./0123456789:;?ABCDEFGHI  
JKLMNOPQRSTUVWXYZabcdefghijklmnop  
qrstuvwxyz{}£“”-**

domep, n, *DomesticTyper*

Similar To: American Typewriter

**! \$%&\* ( ),-./0123456789:;?ABCDEFGHI  
K L M N O P Q R S T U V W X Y Z a b c d e f g h i j k l m n  
o p q r s t u v w x y z ç £ “ ” -**

dough, b, *Doughboy*

Similar To: Domino

**! \$%&\* '(),-. / 0123456789:;? ABCDEFGH  
I JKLMNOPQRSTUVWXYZ abcdefg  
h ijklmnopqrstuvwxyz €£**

egypt, xb, *EgyptoHeavy*

Similar To: Egyptian Bold Extended

**! \$%&\* '(),-. / 0123456789:;? ABCDE  
F GHIJKLMNOPQRSTUVWXYZa  
b cdefghijklmnopqrstuvwxyz €£  
“”-**

entre, xb, *Entrez*

**!"#\$%&\* '(),-. / 0123456789:;? ABCDEFGH  
I JKLMNOPQRSTUVWXYZ abcdefghijkl  
mnopqrstuvwxyz {} €£ “”-**

fresh, xb, *Freshet*

Similar To: Frozen Alaska

**! \$ & \* '(),-. 0123456789:;? ABCDEFGHIJK  
L MNOPQRSTUVWXYZ abcdefghijklmno  
pqrstuvwxyz £ " " -**

garam, b, *GaramondAmerican*

Similar To: Garamond, Aldine

**!"#\$%&\* '(),-. / 0123456789:;? ABCDEFG  
HIJKLMNOPQRSTUVWXYZ abcdefghij  
klmnopqrstuvwxyz {} €£ “”-**

hanse, b, *Hansen*

**!"#\$%&\* '(),-. / 0123456789:;? ABCDEFGHIJKLMN  
OPQRSTUVWXYZ abcdefghijklmnopqrstuvwxyz {  
} €£ “”-**

helsi, xb, *Helsinki*

**! # \$ % & \* ' ( ) , - . / 0 1 2 3 4 5 6 7 8 9 : ; ? A B C D E F G H I  
J K L M N O P Q R S T U V W X Y Z a b c d e f g h i j k l m  
n o p q r s t u v w x y z € £ “ ” -**



henni, n, *Henning*

Similar To: Horley Old Style Roman Bold

**!"#\$%&\*'( ),-./0123456789:;?ABCDEFGHIJ  
KLMNOPQRSTUVWXYZabcdefghijklmnopqrstuvwxyz  
{}£“”-**

hubri, b, *Hubris*

**!"#\$%&\*'( ),-./0123456789:;?ABCDEFGHIJ  
KLMNOPQRSTUVWXYZabcdefghijklmnopqrstuvwxyz  
{}£“”-**

itali, n, *Italianate*

Similar To: Italia

**!"#\$%&\*'( ),-./0123456789:;?ABCDEFGHIJ  
KLMNOPQRSTUVWXYZabcdefghijklmnopqrstuvwxyz  
{}£“”-**

lione, n, *Lionel*

Similar To: Leamington

**!"#\$%&\*'( ),-./0123456789:;?ABCDEFGHIJ  
KLMNOPQRSTUVWXYZabcdefghijklmnopqrstuvwxyz  
{}£“”-**

lunet, b, *Lunetta*

**!"#\$%&\*'( ),-./0123456789:;?ABCDEFGHIJ  
KLMNOPQRSTUVWXYZabcdefghijklmnopqrstuvwxyz  
{}£“”-**

malle, n, *Mallet*

Similar To: Melior, Uranus, Metrion, Ballardville, Zapf Elliptical, Mallard, Melio

**!"#\$%&\*'( ),-./0123456789:;?ABCDEFGHIJ  
KLMNOPQRSTUVWXYZabcdefghijklmnopqrstuvwxyz  
{}£“”-**

notra, b, *Notram*

**!"#\$%&\*'( ),-./0123456789:;?ABCDEFGHI  
JKLMNOPQRSTUVWXYZabcdefghijklmnopqrstuvwxyz  
{}£‘’“”-**

novem, xb, *November*

Similar To: *Dynamo*

**! # \$ % & \* ' ( ), - . / 0 1 2 3 4 5 6 7 8 9 : ; ? A B C D E F G H I  
J K L M N O P Q R S T U V W X Y Z a b c d e f g h i j k l m n o p  
q r s t u v w x y z £ ‘ ’ -**

parad, n, *Parade*

Similar To: *Palatino, Patina, Andover Palatino, Zapf Aldine, Palacio, Palatin,*

**!"#\$%&\*'( ),-./0123456789:;?ABCDEFGHI  
JKLMNOPQRSTUVWXYZabcdefghijklmnopqrstuvwxyz  
{}£‘’“”-**

perdu, n, *Perdure*

**!"#\$%&\*'( ),-./0123456789:;?ABCDEFG  
HIJKLMNOPQRSTUVWXYZabcdefghijklmnopqrstuvwxyz  
mnopqrstuvwxyz{}£‘’“”-**

peria, b, *Periapt*

Similar To: *Stymie, Memphis, Pyramid*

**!"#\$%&\*'( ),-./0123456789:;?ABCD  
EFGHIJKLMNOPQRSTUVWXYZabcd  
efghijklmnopqrstuvwxyz{}£‘’“”-**

peste, b, *Pesten*

Similar To: *Primus, News*

**!"#\$%&\*'( ),-./0123456789:;?ABCDEF  
GHIJKLMNOPQRSTUVWXYZabcdefgh  
ijklmnopqrstuvwxyz{}£‘’**

plitt, b, *Plitter*

Similar To: Plantin Atlantic, Plantin Aldine

**!"#\$%&\*'( ),-./0123456789:;?ABCDEFGHIJKLMNOPQRSTUVWXYZabcdefghijklmnopqrstuvwxyz{}£‘’“”-**

ptboa, n, *PTBoat*

Similar To: PT Barnum, Playbill

**! \$%&\*'( ),-./0123456789:;?ABCDEFGHIJKLMNPOQRSTUVWXYZabcdefghijklmnopqrstuvwxyz €£‘’“”**  
”

rowdy, b, *RowdyHeavy*

Similar To: Raleigh Bold

**!"#\$%&\*'( ),-./0123456789:;?ABCDEFGHIJKLMNPOQRSTUVWXYZabcdefghijklmnopqrstuvwxyz{}£‘’“”-**

scrim, xb, *ScrimBlack*

Similar To: Stratford Extra Bold

**!"#\$%&\*'( ),-./0123456789:;?ABCDEFGHIJKLMNPOQRSTUVWXYZabcdefghijklmnopqrstuvwxyz{}£‘’“”-**

sprat, b, *Spratly*

**! # \$%&\*'( ),-./0123456789:;?ABCDEFGHIJKLMNPOQRSTUVWXYZabcdefghijklmnopqrstuvwxyz €£‘’ -**

subot, b, *SubotBold*

Similar To: Souvenir Bold

**!"#\$%&\*'( ),-./0123456789:;?ABCDEFGHIJKLMNPOQRSTUVWXYZabcdefghijklmnopqrstuvwxyz{}£‘’“”-**

verni, b, *Vernique*

Similar To: Helios II

**!"#\$%&\*'( ),-./0123456789:;?ABCDEFGHI  
JKLMNOPQRSTUVWXYZabcdefghijklmnopqrstuvwxyz  
opqrstuvwxyz{}£‘’“”-**

watso, b, *Watson*

Similar To: Worcester Round Bold

**!"#\$%&\*'( ),-./0123456789:;?ABCDEFG  
HIJKLMNOPQRSTUVWXYZabcdefghijklmnopqrstuvwxyz  
mnopqrstuvwxyz{}£‘’“”-**

worda, b, *WordaBold*

Similar To: Within

**!"#\$%&\*'( ),-./0123456789:;?ABCDEFGHI  
JKLMNOPQRSTUVWXYZabcdefghijklmnopqrstuvwxyz  
opqrstuvwxyz{}£‘’“”-**

## Sans-Serif Fonts — Standard Book Families

---

basti, b, *Bastion*

Similar To: Pendrawn, Brittanic Black

**!"#\$%&\*'( ),-./0123456789:;?ABCDEFGHIJ  
KLMNOPQRSTUVWXYZabcdefghijklmnopqrstuvwxyz  
opqrstuvwxyz{}£‘’“”-**

basti, bi, *BastionItal*

Similar To: Pendrawn, Brittanic Black

**!"#\$%&\*'( ),-./0123456789:;?ABCDEFGHIJ  
KLMNOPQRSTUVWXYZabcdefghijklmnopqrstuvwxyz  
opqrstuvwxyz{}£‘’“”-**

diamo, b, *Diamond*

Similar To: Machine, Diamante

**!"#\$%&\*'( ),-./0123456789:;?ABCDEFGHIJKLMN  
OPQRSTUVWXYZabcdefghijklmnopqrstuvwxyz {  
}£‘’“”-**

diamo, bi, *DiamondItal*

Similar To: Machine

**!"#\$%&\*'( ),-./0123456789:;?ABCDEFGHIJKLMN  
OPQRSTUVWXYZabcdefghijklmnopqrstuvwxyz {  
}£‘’“”-**

dicot, l, *DicotLight*

Similar To: Digital

!"#\$%&\*'( ),-./0123456789:;?ABCDEFGHIJ  
KLMNOPQRSTUVWXYZabcdefghijklmnopqrstuvwxyz  
vwxyz{}£‘’“”-

dicot, n, *DicotMedium*

Similar To: Digital

**!"#\$%&\*'( ),-./0123456789:;?ABCDEFGHIJ  
KLMNOPQRSTUVWXYZabcdefghijklmnopqrstuvwxyz  
uvwxyz{}£‘’“”-**

dicot, b, *DicotBold*

Similar To: Digital

**!"#\$%&\*'( ),-./0123456789:;?ABCDEFGHIJ  
KLMNOPQRSTUVWXYZabcdefghijklmnopqrstuvwxyz  
{ } € £ ‘ ’ “ ” -**

fland, xb, *Flanders*

Similar To: Flyer Extra Bold Condensed

**!"#\$%&\*'( ),-./0123456789:;?ABCDEFGHIJKL  
MNOPQRSTUVWXYZabcdefghijklmnopqrstuvwxyz  
wxyz { } € £ ‘ ’ “ ” -**

fland, xbi, *FlandersItal*

Similar To: Flyer Black Condensed

**!"#\$%&\*'( ),-./0123456789:;?ABCDEFGHIJKL  
MNOPQRSTUVWXYZabcdefghijklmnopqrstuvwxyz  
xyz { } € £ ‘ ’ “ ” -**

forta, b, *Fortana*

**!"#\$%&\*'( ),-./0123456789:;?ABCDEFGHI  
JKLMNOPQRSTUVWXYZabcdefghijklmnopqrstuvwxyz  
pqrstuvwxyz { } € £ ‘ ’ “ ” -**

forta, bi, *FortanaItal*

**!"#\$%&\*'( ),-./0123456789:;?ABCDEFGHI  
JKLMNOPQRSTUVWXYZabcdefghijklmnopqrstuvwxyz  
pqrstuvwxyz { } € £ ‘ ’ “ ” -**

frint, b, *FranklyGothic*

Similar To: Franklin Gothic

**! \$%&\*'( ),-./0123456789:;?ABCDEFGHIJKL  
MNOPQRSTUVWXYZabcdefghijklmnopqrstuvwxyz  
uvwxyz € £ ‘ ’ “ ” -**

frint, xb, *FrintHeavy*

Similar To: Franklin Gothic

**!"#\$%&\*'( ),-./0123456789:;?ABCDEFGHIJ  
KLMNOPQRSTUVWXYZabcdefghijklmnopqrstuvwxyz  
nopqrstuvwxyz{}£€''""”-**

frint, xbi, *FrintItal*

Similar To: Franklin Gothic

**!"#\$%&\*'( ),-./0123456789:;?ABCDEFGHIJ  
KLMNOPQRSTUVWXYZabcdefghijklmnopqrstuvwxyz  
nopqrstuvwxyz{}£€''""”**

fusti, b, *Fustian*

Similar To: Frutiger

**!"#\$%&\*'( ),-./0123456789:;?ABCDEFGHIJ  
KLMNOPQRSTUVWXYZabcdefghijklmnopqrstuvwxyz  
opqrstuvwxyz{}£€''""”-**

fusti, bi, *FustianItal*

Similar To: Frutiger

**!"#\$%&\*'( ),-./0123456789:;?ABCDEFGHIJ  
KLMNOPQRSTUVWXYZabcdefghijklmnopqrstuvwxyz  
opqrstuvwxyz{}£€''""”-**

futan, b, *Futana*

Similar To: Futura

**!"#\$%&\*'( ),-./0123456789:;?ABCDEFGHIJKL  
MNOQRSTUVWXYZabcdefghijklmnopqrstuvwxyz  
z{}£€''""”-**

futan, bi, *FutanaItal*

Similar To: Futura

**!"#\$%&\*'( ),-./0123456789:;?ABCDEFGHIJKL  
MNOQRSTUVWXYZabcdefghijklmnopqrstuvwxyz  
z{}£€''""”-**

tempe, b, *Tempest*

Similar To: Futura Extra Bold Condensed, Alphatura, Spartan Photura, Geometric, Twentieth Century, Techno

**!"#\$%&\*'( ),-./0123456789:;?ABCDEFGHIJK  
LMNOPQRSTUVWXYZabcdefghijklmnopqrstuvwxyz  
wxyz{}£''""''-**

tempe, bi, *TempestItal*

Similar To: Futura Extra Bold Condensed, Alphatura, Spartan Photura, Geometric, Twentieth Century, Techno

**!"#\$%&\*'( ),-./0123456789:;?ABCDEFGHIJK  
LMNOPQRSTUVWXYZabcdefghijklmnopqrstuvwxyz  
wxyz{}£''""''-**

tempe, xb, *TempestHeavy*

Similar To: Futura Extra Bold Condensed, Alphatura, Spartan Photura, Geometric, Twentieth Century, Techno

**!"#\$%&\*'( ),-./0123456789:;?ABCDEFGHI  
GHIJKLMNOPQRSTUVWXYZabcdefghijklmnopqrstuvwxyz  
lmnopqrstuvwxyz{}£''""''-**

tempe, xbi, *TempeHvItal*

Similar To: Futura Extra Bold Condensed, Alphatura, Spartan Photura, Geometric, Twentieth Century, Techno

**!"#\$%&\*'( ),-./0123456789:;?ABCDEFGHI  
GHIJKLMNOPQRSTUVWXYZabcdefghijklmnopqrstuvwxyz  
lmnopqrstuvwxyz{}£''""''-**

galla, b, *Gallant*

Similar To: Gill Sans, Glib, Eric, Humanist

**!"#\$%&\*'( ),-./0123456789:;?ABCDEFG  
HIJKLMNOPQRSTUVWXYZabcdefghijklmnopqrstuvwxyz  
mnopqrstuvwxyz{}£''""''-**

galla, bi, *GallantItal*

Similar To: Gill Sans, Glib, Eric, Humanist

**!"#\$%&\*'( ),-./0123456789:;?ABCDEFG  
HIJKLMNOPQRSTUVWXYZabcdefghijklmnopqrstuvwxyz  
lmnopqrstuvwxyz{}£''""''-**



insig, l, *Insight*

Similar To: Gill Sans Light

! # \$ % & \* ' ( ) , - . / 0 1 2 3 4 5 6 7 8 9 : ; ? A B C D E F G H I J K L M  
N O P Q R S T U V W X Y Z a b c d e f g h i j k l m n o p q r s t u v w  
x y z ç £ ‘ ’ -

harve, b, *Harvest*

Similar To: Helvetica Condensed Black, Newton, AG Buch Swiss, Megaron

**! " # \$ % & \* ' ( ) , - . / 0 1 2 3 4 5 6 7 8 9 : ; ? A B C D E F G H I J K L  
M N O P Q R S T U V W X Y Z a b c d e f g h i j k l m n o p q r s t u v w  
x y z { } ç £ ‘ ’ -**

harve, bi, *HarvestItal*

Similar To: Helvetica Condensed Black, Newton, AG Buch Swiss, Megaron

**! " # \$ % & \* ' ( ) , - . / 0 1 2 3 4 5 6 7 8 9 : ; ? A B C D E F G H I J K L  
M N O P Q R S T U V W X Y Z a b c d e f g h i j k l m n o p q r s t u v w  
x y z { } ç £ ‘ ’ “ ” -**

heroi, b, *HeroicBold*

Similar To: Helvetica, Newton, AG Buch Swiss, Sans Serif Bold Helios, Megaron

**! " # \$ % & \* ' ( ) , - . / 0 1 2 3 4 5 6 7 8 9 : ; ? A B C D E F G H I  
J K L M N O P Q R S T U V W X Y Z a b c d e f g h i j k l m n o  
p q r s t u v w x y z { } ç £ ‘ ’ “ ” -**

heroi, xb, *Heroic*

Similar To: Helvetica, Newton, AG Buch Swiss, Sans Serif Bold Condensed Helios, Megaron

**! " # \$ % & \* ' ( ) , - . / 0 1 2 3 4 5 6 7 8 9 : ; ? A B C D E F G H I J K  
L M N O P Q R S T U V W X Y Z a b c d e f g h i j k l m n o p q r s t u  
v w x y z { } ç £ ‘ ’ “ ” -**

heroi, xbi, *HeroicHeavyItal*

Similar To: Helvetica, Newton, AG Buch Swiss, Sans Serif Bold Helios, Megaron

**! " # \$ % & \* ' ( ) , - . / 0 1 2 3 4 5 6 7 8 9 : ; ? A B C D E F G  
H I J K L M N O P Q R S T U V W X Y Z a b c d e f g h i j k l  
m n o p q r s t u v w x y z { } ç £ ‘ ’ “ ” -**

kable, b, *Kabled*

Similar To: Kabel

**! \$ % & \* ' ( ) , - . / 0 1 2 3 4 5 6 7 8 9 : ; ? A B C D E F G H I J K L  
M N O P Q R S T U V W X Y Z a b c d e f g h i j k l m n o p q r s  
t u v w x y z € £ " ' " " -**

klave, b, *Klaven*

Similar To: Kabel Ultra Bold

**! " # \$ % & \* ' ( ) , - . / 0 1 2 3 4 5 6 7 8 9 : ; ? A B C D E F G H I  
J K L M N O P Q R S T U V W X Y Z a b c d e f g h i j k l m n o  
p q r s t u v w x y z { } € £ ' ' " " " -**

klave, bi, *KlavenItal*

Similar To: Kabel Ultra Bold

**! " # \$ % & \* ' ( ) , - . / 0 1 2 3 4 5 6 7 8 9 : ; ? A B C D E F G H I  
J K L M N O P Q R S T U V W X Y Z a b c d e f g h i j k l m n o  
p q r s t u v w x y z { } € £ ' ' " " " -**

lisse, n, *Lissen*

Similar To: Litera

**! " # \$ % & \* ' ( ) , - . / 0 1 2 3 4 5 6 7 8 9 : ; ? A B C D E F G H I J K  
L M N O P Q R S T U V W X Y Z a b c d e f g h i j k l m n o p q r  
s t u v w x y z { } € £ ' ' " " " -**

lisse, i, *LissenItal*

Similar To: Litera

**! " # \$ % & \* ' ( ) , - . / 0 1 2 3 4 5 6 7 8 9 : ; ? A B C D E F G H I J K  
L M N O P Q R S T U V W X Y Z a b c d e f g h i j k l m n o p q r  
s t u v w x y z { } € £ ' ' " " " -**

mesme, n, *Mesmer*

Similar To: Claro

**! " # \$ % & \* ' ( ) , - . / 0 1 2 3 4 5 6 7 8 9 : ; ? A B C D E F G H I J K  
L M N O P Q R S T U V W X Y Z a b c d e f g h i j k l m n o p q r s t u v  
w x y z { } € £ ' ' " " " -**

mesme, i, *MesmerItal*

Similar To: Claro

**!"#\$%&\*'( ),-./0123456789:;?ABCDEFGHIJK  
LMNOPQRSTUVWXYZabcdefghijklmnopqrstuvwxyz  
wxyz {} € £ ' ' " " ' ' -**

migra, b, *MigraHeavy*

**!"#\$%&\*'( ),-./0123456789:;?ABCDEFGHI  
JKLMNOPQRSTUVWXYZabcdefghijklmnopqrstuvwxyz  
qrstuvwxyz {} € £ ' ' " " ' ' -**

migra, bi, *MigraItal*

**!"#\$%&\*'( ),-./0123456789:;?ABCDEFGHI  
JKLMNOPQRSTUVWXYZabcdefghijklmnopqrstuvwxyz  
pqrstuvwxyz {} € £ ' ' " " ' ' -**

nantu, b, *Nantun*

Similar To: Alpha Gothic, News Gothic, Gothic

**!"#\$%&\*'( ),-./0123456789:;?ABCDEFGHIJ  
KLMNOPQRSTUVWXYZabcdefghijklmnopqrstuvwxyz  
rstuvwxyz {} € £ ' ' " " ' ' -**

nantu, bi, *NantunItal*

Similar To: Alpha Gothic, News Gothic, Gothic

**!"#\$%&\*'( ),-./0123456789:;?ABCDEFGHIJ  
KLMNOPQRSTUVWXYZabcdefghijklmnopqrstuvwxyz  
rstuvwxyz {} € £ ' ' " " ' ' -**

oblas, b, *Oblast*

Similar To: Antique Olive Black, Olivia, Incised

**!"#\$%&\*'( ),-./0123456789:;?ABCDEFGHIJ  
KLMNOPQRSTUVWXYZabcdefghijklmnopqrstuvwxyz  
qrstuvwxyz {} € £ ' ' " " ' ' -**

oblas, bi, *OblastItal*

Similar To: Antique Olive Black, Olivia, Incised

**!"#\$%&\*'( ),-./0123456789:;?ABCDEFGHIJ  
KLMNOPQRSTUVWXYZabcdefghijklmnopqrstuvwxyz  
qrstuvwxyz {} € £ ' ' " " ' ' -**

olivi, b, *Olivian*

Similar To: Antique Olive, Olivia, Incised

**! \$ % & \* ( ) , . / 0 1 2 3 4 5 6 7 8 9 : ; ? A B C D E F G H I J K  
L M N O P Q R S T U V W X Y Z a b c d e f g h i j k l m n o p q  
r s t u v w x y z € £ " ' " " -**

oblem, b, *OblemBold*

**! " # \$ % & \* ' ( ) , - . / 0 1 2 3 4 5 6 7 8 9 : ; ? A B C D E F G H I  
J K L M N O P Q R S T U V W X Y Z a b c d e f g h i j k l m n o  
p q r s t u v w x y z { } € £ " ' " " -**

oblem, bi, *OblemItal*

**! " # \$ % & \* ' ( ) , - . / 0 1 2 3 4 5 6 7 8 9 : ; ? A B C D E F G H  
I J K L M N O P Q R S T U V W X Y Z a b c d e f g h i j k l m  
n o p q r s t u v w x y z { } € £ " ' " " -**

octog, n, *Octogon*

Similar To: Octog Bold, Musica, Chelmsford, Optima Bold, Zapf Humanist, Oracle

**! " # \$ % & \* ' ( ) , - . / 0 1 2 3 4 5 6 7 8 9 : ; ? A B C D E F G H I  
J K L M N O P Q R S T U V W X Y Z a b c d e f g h i j k l m n o p  
q r s t u v w x y z { } € £ " ' " " -**

octog, i, *CalmarItal*

Similar To: Optima Bold Oblique, Musica, Chelmsford, Zapf Humanist, Oracle

**! " # \$ % & \* ' ( ) , - . / 0 1 2 3 4 5 6 7 8 9 : ; ? A B C D E F G H I  
J K L M N O P Q R S T U V W X Y Z a b c d e f g h i j k l m n o p  
q r s t u v w x y z { } € £ " ' " " -**

silva, b *SilvaBold*

Similar To: Optima Bold, Musica, Optimist, Zapf Humanist, Oracle, Optim Black, Chelmsford

**! " # \$ % & \* ' ( ) , - . / 0 1 2 3 4 5 6 7 8 9 : ; ? A B C D E F G H I  
J K L M N O P Q R S T U V W X Y Z a b c d e f g h i j k l m n o p q  
r s t u v w x y z { } € £ " ' " " -**

silva, bi, *SilvaItal*

Similar To: Optima Bold, Musica, Optimist, Zapf Humanist, Oracle, Optim Black, Chelmsford

**!"#\$%&\*'( ),-./0123456789:;?ABCDEFGHIJ  
KLMNOPQRSTUVWXYZabcdefghijklmnopqrstuvwxyz  
{ } € £ ' ' " " ' ' -**

palen, b, *Palent*

**!"#\$%&\*'( ),-./0123456789:;?ABCDEFGHIJK  
LMNOPQRSTUVWXYZabcdefghijklmnopqrstuvwxyz  
vwxyz { } € £ ' ' " " ' ' -**

palen, bi, *PalentItal*

**!"#\$%&\*'( ),-./0123456789:;?ABCDEFGHIJK  
LMNOPQRSTUVWXYZabcdefghijklmnopqrstuvwxyz  
vwxyz { } € £ ' ' " " ' ' -**

phras, l, *PhrasticLight*

Similar To: Pasadena

**! # \$ % & \* ' ( ),-./0123456789:;?ABCDEFGHIJKLMN  
OPQRSTUVWXYZabcdefghijklmnopqrstuvwxyz € £ ' ' -**

phras, m, *PhrasticMedium*

Similar To: Pasadena

**! # \$ % & \* ' ( ),-./0123456789:;?ABCDEFGHIJKLM  
NOPQRSTUVWXYZabcdefghijklmnopqrstuvwxyz  
€ £ ' ' -**

phras, b, *PhrasticBold*

Similar To: Pasadena

**! # \$ % & \* ' ( ),-./0123456789:;?ABCDEFGHIJKLM  
NOPQRSTUVWXYZabcdefghijklmnopqrstuvwxyz  
z € £ ' ' -**

phras, xb, *PhrasExBold*

Similar To: Pasadena

**!"#\$%&\*'(),-./0123456789:;?ABCDEFGHIJKL  
MNOPQRSTUVWXYZabcdefghijklmnopqrstuvwxyz  
xyz{}£'""' -**

phras, bi, *PhrasticExtraItal*

Similar To: Pasadena

**!"#\$%&\*'(),-./0123456789:;?ABCDEFGHIJKL  
MNOPQRSTUVWXYZabcdefghijklmnopqrstuvwxyz  
xyz{}£'""' -**

roost, b, *RoostHeavy*

Similar To: Revue, Review, Ragtime Heavy

**!"#\$%&\*'(),-./0123456789:;?ABCDEFGHI  
JKLMNOPQRSTUVWXYZabcdefghijklmnopqrstuvwxyz  
qrstuvwxyz{}£'""' -**

roost, bi, *RoostItal*

Similar To: Revue, Review

**!"#\$%&\*'(),-./0123456789:;?ABCDEFGHI  
JKLMNOPQRSTUVWXYZabcdefghijklmnopqrstuvwxyz  
qrstuvwxyz{}£'""' -**

sentr, n, *Sentry*

Similar To: Syntax Ultra Black

**!"#\$%&\*'(),-./0123456789:;?ABCDEFGF  
GHIJKLMNOPQRSTUVWXYZabcdefghijklmnopq  
klmnopqrstuvwxyz{}£'""' -**

sentr, xbi, *SentryItal*

Similar To: Syntax Ultra Black

**!"#\$%&\*'(),-./0123456789:;?ABCDEFGF  
GHIJKLMNOPQRSTUVWXYZabcdefghijklmnopq  
klmnopqrstuvwxyz{}£'""' -**

unpac, xb, *Unpact*

Similar To: Univers Extra Black, Alphavers, Univers Swiss

**!"#\$%&\*'( ),-./0123456789:;?ABCDEFGHIJ  
GHIJKLMNOPQRSTUVWXYZabcdefghijklmnopqrstuvwxyz  
klmnopqrstuvwxyz{}£€''""'-**

unpac, xbi, *UnpactItal*

Similar To: Univers Extra Black, Alphavers, Univers Swiss

**!"#\$%&\*'( ),-./0123456789:;?ABCDEFGHIJ  
GHIJKLMNOPQRSTUVWXYZabcdefghijklmnopqrstuvwxyz  
klmnopqrstuvwxyz{}£€''""'-**

valke, b, *ValkenMedium*

Similar To: VAG Rundschrift Bold, Frankfurter Medium

**!#\$%&\*'( ),-./0123456789:;?ABCDEFGHIJ  
KLMNOPQRSTUVWXYZabcdefghijklmnopqrstuvwxyz  
rstuvwxyz ç£'' -**

valke, xb, *Valken*

Similar To: VAG Rundschrift Black, Frankfurter

**!"#\$%&\*'( ),-./0123456789:;?ABCDEFGH  
IJKLMNOPQRSTUVWXYZabcdefghijklmnopqrstuvwxyz  
nopqrstuvwxyz[]£€''""'-**

valke, xbi, *ValkenItal*

Similar To: VAG Rundschrift Black, Frankfurter

**!"#\$%&\*'( ),-./0123456789:;?ABCDEFGH  
IJKLMNOPQRSTUVWXYZabcdefghijklmnopqrstuvwxyz  
nopqrstuvwxyz[]£€''""'-**

## Individual Sans-Serif Fonts

---

bolst, b, *BolsterBold*

Similar To: Bolt Bold

**! \$%&\* ' ,-. / 0123456789:;?ABCDEFGHIJ  
KLMNOPQRSTUVWXYZabcdefghijklmnopqrstuvwxyz  
p q r s t u v w x y z ç £ ' ' " " -**

focus, b, *FocusFont*

Similar To: Folio Extra Bold

**! \$%&\* ( ),-. / 0123456789:;?ABCDEFGHIJ  
GHIJKLMNOPQRSTUVWXYZabcdefghijklmnopqrstuvwxyz  
hijklmnopqrstuvwxyz ç £ " " -**

glock, b, *Glockenspiel*

Similar To: Global

**! \$%&\* ' ( ),-. / 0123456789:;?ABCDEFGHIJK  
LMNOPQRSTUVWXYZabcdefghijklmnopqrstuvwxyz  
r st u v w x y z ç £ ' ' " " -**

hemme, b, *Hemmert*

Similar To: Clearface Black

**! # \$%&\* ' ( ),-. / 0123456789:;?ABCDEFGHIJ  
KLMNOPQRSTUVWXYZabcdefghijklmnopqrstuvwxyz  
s t u v w x y z ç £ ' ' -**

lovej, n, *Lovejoy*

**! # \$%&\* ' ( ),-. / 0123456789:;?ABCDEFGHIJK  
LMNOPQRSTUVWXYZabcdefghijklmnopqrstuvwxyz  
s t u v w x y z ç £ ' ' -**



marjo, n, *Marjorie*

**! # \$ % & \* ' ( ) , - . / 0 1 2 3 4 5 6 7 8 9 : ; ? A B C D E F G H I J K  
L M N O P Q R S T U V W X Y Z a b c d e f g h i j k l m n o p q r s  
t u v w x y z € £ ' ' -**

mingl, n, *Mingle*

Similar To: Tabasco

**! # \$ % & \* ' ( ) , - . / 0 1 2 3 4 5 6 7 8 9 : ; ? A B C D E F G H I J K L  
M N O P Q R S T U V W X Y Z a b c d e f g h i j k l m n o p q r s t  
u v w x y z € £ ' ' -**

opine, xb, *OpineHeavy*

Similar To: Ornitone Heavy

**! " # \$ % & \* ' ( ) , - . / 0 1 2 3 4 5 6 7 8 9 : ; ? A B C D E F G  
H I J K L M N O P Q R S T U V W X Y Z a b c d e f g h i j k l  
m n o p q r s t u v w x y z { } € £ ' ' " " -**

rhyth, xb, *Rhythm*

**! # \$ % & \* ' [ ] , - . / 0 1 2 3 4 5 6 7 8 9 : ; ? A B C D E F G  
H I J K L M N O P Q R S T U V W X Y Z a b c d e f g h i j k l  
m n o p q r s t u v w x y z € £ ' ' -**

ronda, n, *Rondalo*

Similar To: Ronda

**! \$ % & \* ( ) , - . 0 1 2 3 4 5 6 7 8 9 : ; ? A B C D E F G H I J K L M N  
O P Q R S T U V W X Y Z a b c d e f g h i j k l m n o p q r s t u v w x  
y z £ " "**

## Script and Calligraphy Faces

alfre, n, *Alfredo*

Similar To: Alfereta

!\$ & ( ), -. 0 1 2 3 4 5 6 7 8 9 : ; ? A B C D E F G H I J K L M N  
O P Q R S T U V W X Y Z a b c d e f g h i j k l m n o p q r s t u v w x  
y z ' " "

anglo, n, *Anglophile*

Similar To: Anglo

!\$% & ' ( ), -. / 0 1 2 3 4 5 6 7 8 9 : ; ? A B C D E F G H I J K L  
M N O P Q R S T U V W X Y Z a b c d e f g h i j k l m n o p q r  
s t u v w x y z £ ' " "

artic, n, *Articulate*

Similar To: Zanzibar

!\$% & \* ( ), -. / 0 1 2 3 4 5 6 7 8 9 : ; ? A B C D E F G H I J K L M N O P Q R S T  
U V W X Y Z a b c d e f g h i j k l m n o p q r s t u v w x y z £ ' " -

autho, n, *Author*

Similar To: Shelley Andante, Coventry Script, Commercial Script

!\$% & \* ( ), -. / 0 1 2 3 4 5 6 7 8 9 : ; ? A B C D E F G H I J  
K L M N O P Q R S T U V W X Y Z a b c d e f g h i j k l m n o p  
q r s t u v w x y z £ ' " -

balth, n, *Balthazar*

Similar To: Balzac

!\$% & \* ' ( ), -. / 0 1 2 3 4 5 6 7 8 9 : ; ? A B C D E F G H I J K L M N  
O P Q R S T U V W X Y Z a b c d e f g h i j k l m n o p q r s t u v w x y z  
£ ' " "

bangl, n, *Bangle*

Similar To: Bijou

!\$% & \* , -. / 0 1 2 3 4 5 6 7 8 9 : ; ? A B C D E F G H I J K L M N O P Q R S T U V  
W X Y Z a b c d e f g h i j k l m n o p q r s t u v w x y z £ ' " "

biors, n, *Biorst*

Similar To: Balladeer

!\$%&\*(),-./0123456789:;?ABCDEFGHIJKLMNO  
PQRSTUVWXYZabcdefghijklmnopqrstuvwxyz£'“”

-

blarn, n, *Blarney*

Similar To: Chevalier

!\$%&\*(),-./0123456789:;?ABCDEFGHIJKL  
MNOPQRSTUVWXYZabcdefghijklmnopqrstuvwxyz  
vwxyz£'’ -

borea, n, *Borealis*

Similar To: Mistral, Zephyr Script

!\$%&\*(),-./0123456789:;?ABCDEFGHIJKLM  
NOPQRSTUVWXYZabcdefghijklmnopqrstuvwxyz  
xyz£'’ -

bruss, n, *Brussels*

Similar To: Brush Script,

!\$%&\*(),-./0123456789:;?ABCDEFGHIJKL  
MNOPQRSTUVWXYZabcdefghijklmnopqrstuvwxyz  
pqrstuvwxyz£'’ -

marke, n, *Marker*

Similar To: Accent, Ark Brush Script

**!\$%&\*(),-./0123456789:;?ABCDEFGHI  
GHIJKLMNOPQRSTUVWXYZabcdefgh  
ijklmnopqrstuvwxyz£'’**

marti, n, *Martina*

Similar To: Haywood, Brush Script

!\$%&\*(),-./0123456789:;?ABCDEFGHIJKL  
MNOPQRSTUVWXYZabcdefghijklmnopqrstuvwxyz  
xyz£'’ -

calli, n, *Calligraphic*

Similar To: Ondine

!\$%&\*(),-./0123456789:;?ABCDEFGHIJKL  
MNOPQRSTUVWXYZabcdefghijklmnopq  
rstuvwxyz€£‘’ –

chick, n, *Chickadee*

Similar To: University

!\$%&\*(),-./0123456789:;?ABCDEFGHIJKLMNO  
PQRSTUVWXYZabcdefghijklmnopqrstu  
vwxyz£‘’

coler, n, *Coleridge*

Similar To: Regency Script, Palace Script, Florentine Script

!\$%&\*(),-./0123456789:;?ABCDEFGHIJKL  
MNOPQRSTUVWXYZabcdefghijklmnopqr  
stuvwxyz£‘’ –

conte, n, *Contempo*

Similar To: Gillies Gothic Bold

!\$%&\*‘’(),-./0123456789:;?ABCDEFGHIJ  
KLMNOPQRSTUVWXYZabcdefghijklmnopq  
rstuvwxyz€£‘’ –

cursi, n, *Cursive*

Similar To: Alexandra, Yale Script, Yorkshire

!\$%&\*‘’(),-./0123456789:;?ABCDEFGHI  
JKLMNOPQRSTUVWXYZabcdefghijklmnop  
qrstuvwxyz€£‘’ –

domex, n, *DomesticText*

Similar To: American Text

!\$%&\*‘’,-./0123456789:;?ABCDEFGHIJKL  
MNOPQRSTU VWXYZabcdefghijklmnop  
qrstuvwxyz€£‘’ –

domin, n, *Dominican*

Similar To: Dom Casual, Ad Bold Polka

!\$%&‘’<>,-./0123456789:;?ABCDEFGHIJKL  
MNOPQRSTU VWXYZabcdefghijklmnop  
qrstuvwxyz€‘’ –

fleet, n, *Fleetwood*

Similar To: Kalligraphia

!\$%&\*(),-. / 0 1 2 3 4 5 6 7 8 9 : ; ? A B C D E F G H I J K  
L M N O P Q R S T U V W X Y Z a b c d e f g h i j k l m n o p q r  
s t u v w x y z € £ ' ' -

flour, n, *Flourish*

Similar To: Florentine

!\$%&\*(),-. / 0 1 2 3 4 5 6 7 8 9 : ; ? A B C D E F G H I J K L M N O P  
Q R S T U V W X Y Z a b c d e f g h i j k l m n o p q r s t u v w x y z € £  
“ ”

grace, n, *Graceful*

!# \$ % & ( ) \* , . - / 0 1 2 3 4 5 6 7 8 9 : ; ? A B C D E F G H  
I J K L M N O P Q R S T U V W X Y Z \ a b c d e f g h i  
j k l m n o p q r s t u v w x y z ñ € £ ' ' ' " ffl. " ... `

hombr, n, *Hombre*

Similar To: Honda

!\$%&\*(),-. / 0 1 2 3 4 5 6 7 8 9 : ; ? A B C D E F G H I J K L M N O P Q R S  
T U V W X Y Z a b c d e f g h i j k l m n o p q r s t u v w x y z € £ ' ' " "

ingen, n, *Ingenius*

Similar To: Ingrid

!\$%&\*(),-. / 0 1 2 3 4 5 6 7 8 9 : ; ? A B C D E F G H I J K L  
M N O P Q R S T U V W X Y Z a b c d e f g h i j k l m n o p  
q r s t u v w x y z € £ ' ' " " -

krypt, n, *Krypton*

Similar To: Boa Script

!\$%&\*'( ),-. / 0 1 2 3 4 5 6 7 8 9 : ; ? A B C D E F G H  
I J K L M N O P Q R S T U V W X Y Z a b c d e f g h i j k l m n  
o p q r s t u v w x y z € £ ' ' -

## Chapter 2: Fonts

---

legac, n, *Legacy*

Similar To: Legend

!\$%&\*('),-. / 0 1 2 3 4 5 6 7 8 9 : ; , > ? A B C D E F G H I J K L M N O P Q  
R S T U V W X Y Z a b c d e f g h i j k l m n o p q r s t u v w x y z " "

manor, n, *Manorly*

Similar To: Fette Fraktur, Wittenberger, Fraktur Bold

!\$%&\*('), = . / 0 1 2 3 4 5 6 7 8 9 : ; , > ? A B C D E F G H I J  
K L M N O P Q R S T U V W X Y Z a b c d e f g h i j k l m n  
o p q r s t u v w x y z € £ ' ' -

marga, n, *Margaret*

!\$%&\*('), -. / 0 1 2 3 4 5 6 7 8 9 : ; , > ? A B C D E F G H I J K L M N O P Q  
R S T U V W X Y Z a b c d e f g h i j k l m n o p q r s t u v w x y z € £ ' ' -

murie, n, *Muriel*

Similar To: Murray, Murray Hill

!\$%&\*('), -. / 0 1 2 3 4 5 6 7 8 9 : ; , > ? A B C D E F G H I J K L M N O P Q  
R S T U V W X Y Z a b c d e f g h i j k l m n o p q r s t u v w x y z € £ ' ' -

olive, n, *Olivette*

Similar To: Olive Choc

!\$%&\*('), . / 0 1 2 3 4 5 6 7 8 9 : ; , > ? A B C D E F G H I J K L M  
N O P Q R S T U V W X Y Z a b c d e f g h i j k l m n o p q r s t u v w x y  
z € £ " "

padul, n, *Padula*

Similar To: Kells

!\$%&\*('), -. / 0 1 2 3 4 5 6 7 8 9 : ; , > ? A B C D E F G H I J K L  
M N O P Q R S T U V W X Y Z a b c d e f g h i j k l m n o p q r s t  
u v w x y z € £ ' ' -

prosa, n, *Prosaic*

Similar To: Paladin

!\$%&\*('), -. / 0 1 2 3 4 5 6 7 8 9 : ; , > ? A B C D E F G H I J  
K L M N O P Q R S T U V W X Y Z a b c d e f g h i j k l  
m n o p q r s t u v w x y z € £ ' ' -

reinh, n, *Reinhard*

Similar To: Reiner Black

!\$%&\*('),-. / 0123456789:;? ABCDEFGHIJKL  
M NOPQRSTUVWXYZ abcdefghijklmnopqrst  
u vwxyz € £ " " -

splas, n, *Splash*

Similar To: Sprint

!\$ & \* ( ) , - . 0123456789:;? ABCDEFGHIJK  
L MNOPQRSTUVWXYZ abcdefghijklm  
n opqrstuvwxyz €

sprit, n, *Sprite*

Similar To: Bison

!\$% & \* ' ( ) , - . / 0123456789:;? ABCDEFGHIJKLMNOP  
QRSTUVWXYZ abcdefghijklmnopqrstuvwxyz € £ ' ' -

stunn, n, *Stunning*

Similar To: Studio Bold

!\$% & \* ( ) , - . / 0123456789:;? ABCDEFGHIJKLM  
N OPQRSTUVWXYZ abcdefghijklmnopqrst  
u vwxyz € £ " "

toled, n, *Toledo*

Similar To: Apache

!\$% & \* ( ) , - . / 0123456789:;? ABCDEFGHIJ  
KLMNOPQRSTUVWXYZ abcdefghijklmnop  
qrstuvwxyz € £ ' ' -

## Creative Display Fonts — Families

---

balle, n, *Ballet*

Similar To: Broadway, Ritz, Thinline

!\$%&\* '(),-. / 0123456789:;?ABCDEFGHI  
FGHIJKLMNOPQRSTUVWXYZabcd  
efghijklmnopqrstuvwxyzç£ “” -

balle, l, *BalletEngraved*

Similar To: Broadway, Engraved

!\$%&\* '(),-. / 0123456789:;?ABCDEFGHI  
HIJKLMNOPQRSTUVWXYZabcdefghij  
klmnopqrstuvwxyzç£ “”

decor, n, *Decollage*

Similar To: Broadway, Ritz Condensed, Thickline Condensed

!\$%&\* '(),-. / 0123456789:;?ABCDEFGHIJKL  
MNOPQRSTUVWXYZabcdefghijklmnopqrstu  
vwxyzç£ “” -

decor, i, *DecorateItal*

Similar To: Broadway, Ritz Condensed, Thickline Condensed Italic

!\$%&\* '(),-. / 0123456789:;?ABCDEFGHIJKL  
MNOPQRSTUVWXYZabcdefghijklmnopqrstu  
vwxyzç£ “” -

decor, bi, *DecorateBoldItal*

Similar To: Broadway, Ritz Italic, Thickline Italic

!\$%&\* '(),-. / 0123456789:;?ABCDEFGHI  
HIJKLMNOPQRSTUVWXYZabcdefghij  
klmnopqrstuvwxyzç£ “” -

dayto, b, *Dayton*

Similar To: Albers, Futura, NeufvilleDeko Black

!\$%&\* '(),-. / 0123456789:;?ABCDEFGHIJKL  
MNOPQRSTUVWXYZabcdefghijklmnopqrst  
uvwxyzç£ “” -



dayto, bi, *DaytonItal*

Similar To: Albers, ItalicDeko Black Ital

**!\$%&\*'( ),-./0123456789:;?ABCDEFGHIJKL  
MNOPQRSTUVWXYZabcdefghijklmnopqrstuvwxyz  
vwxyzç£‘’“”-**

dayto, xb, *Fulton*

Similar To: Albers Expanded

**!\$%&\*'( ),-./0123456789:;?ABCDEFGHI  
GHIJKLMNOPQRSTUVWXYZabcdefgh  
ijklmnopqrstuvwxyzç£‘’“”**

emmet, b, *Emmett*

**!\$%&\*'( ),-./0123456789:;?ABCDEFGHIK  
LMNOPQRSTUVWXYZabcdefghijklmnopqrs  
tuvwxyzç£‘’-**

emmet, xb, *Gaucher*

Similar To: Hobo, Tramp

**!\$%&\*'( ),-./0123456789:;?ABCDEFGHIKL  
MNOPQRSTUVWXYZabcdefghijklmnopqrstu  
vwxyzç£‘’-**

fiddl, n, *Fiddle*

Similar To: Gatsby, Premier Lightline

!\$%&\*'( ),-./0123456789:;?ABCDEFGHIJKLMNO  
PQRSTUVWXYZabcdefghijklmnopqrstuvwxyzç£‘’-

fiddl, i, *FiddleItal*

Similar To: Gatsby, Premier Lightline

!\$%&\*'( ),-./0123456789:;?ABCDEFGHIJKLMNO  
PQRSTUVWXYZabcdefghijklmnopqrstuvwxyzç£‘’-

melod, m, *MelodMedium*

**!\$%&\*'( ),-./0123456789:;?ABCDEFGHIJK  
LMNOPQRSTUVWXYZabcdefghijklmnop  
qrstuvwxyzç£‘’-**

melod, b, *MelodBold*

**!\$%&\*'( ),-. / 0 1 2 3 4 5 6 7 8 9 : ; ? A B C D E F G H I J K  
L M N O P Q R S T U U W X Y Z a b c d e f g h i j k l m n o p  
q r s t u u w x y z ç £ ' ' " " -**

melod, bi, *MelodItal*

**!\$%&\*'( ),-. / 0 1 2 3 4 5 6 7 8 9 : ; ? A B C D E F G H I J  
K L M N O P Q R S T U U W X Y Z a b c d e f g h i j k l m n o  
p q r s t u u w x y z ç £ ' ' " " -**

penul, n, *Penultimate*

Similar To: Peignot, Monterey, Penyoe

**!\$%&\*'( ),-. / 0 1 2 3 4 5 6 7 8 9 : ; ? A B C D E F G H I J K L  
M N O P Q R S T U V W X Y Z a b c d e f g h i j k l m n o p q r s t  
u v w x y z ç £ ' ' " "**

penul, i, *PenultimateItal*

Similar To: Peignot, Monterey, Penyoe

**!\$%&\*'( ),-. / 0 1 2 3 4 5 6 7 8 9 : ; ? A B C D E F G H I J  
K L M N O P Q R S T U V W X Y Z a b c d e f g h i j k l m n o p  
q r s t u v w x y z ç £ ' ' -**

penul, li, *PenulLtItal*

Similar To: Peignot, Monterey, Penyoe

**!\$%&\*'( ),-. / 0 1 2 3 4 5 6 7 8 9 : ; ? A B C D E F G H I J K L M  
N O P Q R S T U V W X Y Z a b c d e f g h i j k l m n o p q r s t u v w  
x y z ç £ ' ' -**

## Individual Creative Fonts

---

abbes, n, *Abbess*

Similar To: Abbott Old Style

**!\$%&'()\*,-./0123456789:;?ABCDEFGHIJKL  
MNOPQRSTUVWXYZabcdefghijklmnopqrstuvwxyz  
opqrstuvwxyzç£“”-**

acapp, n, *Acappella*

Similar To: Acapulco Light

**!\$%&\*(),-./0123456789:;?ABCDEFGHIJK  
LMNOPQRSTUVWXYZabcdefghijklmnopqrstuvwxyz  
qrstuvwxyzç£“”**

acrop, n, *Acropolis*

Similar To: Agraphicus

**!\$%&\*(),-./0123456789:;?ABCDEFGHIJKLM  
NOPQRSTUVWXYZabcdefghijklmnopqrstuvwxyz  
wxyzç£“”-**

addle, n, *Addled*

Similar To: Ad Lib

**!\$%&(),-./0123456789:;?ABCDEFGHIJKL  
MNOPQRSTUVWXYZabcdefghijklmnopqrstuvwxyz  
rstuvwxyzç“”**

aliso, n, *Alison*

**!\$%&\*'[()],-./0123456789:;?ABCDEFGHI  
JKLMNOPQRSTUVWXYZabcdefghijklmnopqrstuvwxyz  
opqrstuvwxyzç£‘’-**

ameth, n, *Amethyst*

Similar To: Amelia

**!\$%&\*(),-./0123456789:;?ABCDEFGHIJKLMNO  
PQRSTUVWXYZabcdefghijklmnopqrstuvwxyzç£  
“”**

andor, n, *Andorra*

Similar To: Andromeda

!\$%&'(),-./0123456789:;?ABCDEFGHIJK  
LMNOPQRSTUVWXYZabcdefghijklmnop  
qrstuvwxyz£' '

antic, n, *AnticFont*

Similar To: Anthem

!\$%&' \* ( ), - . / 0 1 2 3 4 5 6 7 8 9 : ; ? A B C D E F G H I J K L M  
N O P Q R S T U V W X Y Z a b c d e f g h i j k l m n o p q r s t u  
v w x y z £ " ' =

apple, n, *Appleby*

Similar To: Seigfreid

!\$%&' \* ( ), - . / 0 1 2 3 4 5 6 7 8 9 : ; ? A B C D E F G H I J K L M N O P Q R S T U  
V W X Y Z a b c d e f g h i j k l m n o p q r s t u v w x y z £ ' ' -

aubre, n, *Aubrey*

Similar To: Boutique

!\$%&' \* ( ), - . / 0 1 2 3 4 5 6 7 8 9 : ; ? A B C D E F G H I J K L M N O P Q R S T U V W X  
Y Z a b c d e f g h i j k l m n o p q r s t u v w x y z £ ' ' -

benda, n, *BendalGothicItal*

Benguiat Gothic

!\$%&' \* ( ), - . / 0 1 2 3 4 5 6 7 8 9 : ; ? A B C D E F G  
H I J K L M N O P Q R S T U V W X Y Z a b c d e f g h i j k  
l m n o p q r s t u v w x y z £ ' ' " " -

block, n, *Blocky*

Similar To: Bloc

!\$%&' \* ( ), - . / 0 1 2 3 4 5 6 7 8 9 : ; ? A B C D E F G  
H I J K L M N O P Q R S T U V W X Y Z a b c d e f g h i j  
k l m n o p q r s t u v w x y z £ " " -

brand, n, *Brandish*

Similar To: Blippo

!\$%&\* ' ( ) , - . / 0 1 2 3 4 5 6 7 8 9 : ; ? A B C D E F G H I J K L M  
N O P Q R S T U V W X Y Z a b c d e f g h i j k l m n o p q r s  
t u v w x y z ç £ ' " " "

bubbl, n, *Bubbly*

Similar To: Bubble Dubble

!\$%&\* ( ) , - . / 0 1 2 3 4 5 6 7 8 9 : ; ? A B C D E F G H I J K L M  
N O P Q R S T U V W X Y Z a b c d e f g h i j k l m n o p q r s t u v  
w x y z ç £ " " "

busin, n, *Business*

!\$%&' ( ) , - . / 0 1 2 3 4 5 6 7 8 9 : ; ? A B C D E F G H I J K L M N O P Q R S T U V W X Y Z a b c d e  
f g h i j k l m n o p q r s t u v w x y z ç £ ' " " "

coast, n, *Coaster*

!\$%&\* ' ( ) , - . 0 1 2 3 4 5 6 7 8 9 : ; ? A B C D E F G H I J K L M N  
O P Q R S T U V W X Y Z a b c d e f g h i j k l m n o p q r s t u v w x y z  
ç •

corpo, n, *Corporate*

Similar To: Giotto Bold, Compacta Light

!\$%&\* ' ( ) , - . / 0 1 2 3 4 5 6 7 8 9 : ; ? A B C D E F G H I J K L M N O P Q R S T U V W X Y Z a b c d e f g h i j k l  
m n o p q r s t u v w x y z ç £ ' ' —

crand, n, *Crandall*

!\$%&\* ' ( ) , - . / 0 1 2 3 4 5 6 7 8 9 : ; ? A B C D E F G H I J K L M N  
O P Q R S T U V W X Y Z a b c d e f g h i j k l m n o p q r s t u v w x y z  
ç £ ' ' —

denea, n, *Deneane*

!\$%&\* ' ( ) , - . / 0 1 2 3 4 5 6 7 8 9 : ; ? A B C D E F G H I J K  
L M N O P Q R S T U V W X Y Z a b c d e f g h i j k l m n o p q r  
s t u v w x y z ç £ ' ' —

domec, n, *DomesticUncial*

Similar To: American Uncial

**!\$%&\* ( ), - . / 0 1 2 3 4 5 6 7 8 9 : ; ? A B C D E F  
G H I J K L M N O P Q R S T U V W X Y Z a b c d e f g  
h i j k l m n o p q r s t u v w x y z £**

egber, n, *Egbert*

Similar To: Eight Ball

**!\$%&\* ( ), - . / 0 1 2 3 4 5 6 7 8 9 : ; ? A B C D E F  
G H I J K L M N O P Q R S T U V W X Y Z a b c d e f  
g h i j k l m n o p q r s t u v w x y z £ " " -**

elyse, n, *Elysee*

Similar To: Looking Glass

**!\$%&\* ' ( ), - . / 0 1 2 3 4 5 6 7 8 9 : ; ? A B C D E F G H I J K L  
M N O P Q R S T U V W X Y Z a b c d e f g h i j k l m n o p q r  
s t u v w x y z £ ' " -**

enliv, n, *Enliven*

Similar To: Enigma

**!\$%£ \* " ( ), - . / 0 1 2 3 4 5 6 7 8 9 : ; ? A B C D E F G H  
I J K L M N O P Q R S T U V W X Y Z a b c d e f g h i j k l  
m n o p q r s t u v w x y z £ " "**

frisi, n, *Frisian*

Similar To: Abilene, DryGulch

**!\$%&\* ' ( ), - . / 0 1 2 3 4 5 6 7 8 9 : ; ? A B C D E F G H I J K L M N O P Q  
R S T U V W X Y Z A B C D E F G H I J K L M N O P Q R S T U V W X Y Z £ ' ,**

gangp, n, *Gangplank*

Similar To: Gesh Export

**!\$%&\* ' ( ), - . / 0 1 2 3 4 5 6 7 8 9 : ; ? A B C D E F G  
H I J K L M N O P Q R S T U V W X Y Z a b c d e f g h i j k l  
m n o p q r s t u v w x y z £ ' " "**

hefty, n, *HeftyFont*

Similar To: Hellenic Wide

!\$%&\* ( ), - . / 0 1 2 3 4 5 6 7 8 9 :  
; ? A B C D E F G H I J K L M N  
O P Q R S T U V W X Y Z a b c  
d e f g h i j k l m n o p q r s t u v  
w x y z € £ “ ”

jaspe, n, *Jasper*

Similar To: Japanette

!\$%&\* ( ), - . / 0 1 2 3 4 5 6 7 8 9 : ; ? A B C D E F G H I J K L M  
N O P Q R S T U V W X Y Z a b c d e f g h i j k l m n o p q r s t u v w  
x y z € £ “ ”

lulla, n, *Lullaby*

Similar To: Right Bank

!\$%&\* " ( ) , - . / 0 1 2 3 4 5 6 7 8 9 : ; ? A B C D E F G  
H I J K L M N O P Q R S T U V W X Y Z A B C D E F G H I J K L M N O P Q  
R S T U V W X Y Z € £ “ ” -

megat, n, *Megaton*

Similar To: Metropolis Bold

!\$%&\* ( ), - . / 0 1 2 3 4 5 6 7 8 9 : ; ? A B C D E F G  
H I J K L M N O P Q R S T U V W X Y Z a b c d  
e f g h i j k l m n o p q r s t u v w x y z € £ “ ”

miner, n, *Minerva*

Similar To: Mimi Slender

!\$%&\* ( ), - . / 0 1 2 3 4 5 6 7 8 9 : ; ? A B C D E F G H I J K L M N O P Q  
R S T U V W X Y Z a b c d e f g h i j k l m n o p q r s t u v w x y z € £ “ ”

monst, n, *Monster*

Similar To: Mr. Big

!\$%&\* ' ( ), - . / 0 1 2 3 4 5 6 7 8 9 : ; ? A B C D E F  
G H I J K L M N O P Q R S T U V W X Y Z a b c d e f g h i j  
k l m n o p q r s t u v w x y z € £ ' ' " "

moonb, n, *Moonbeam*

Similar To: Moon Medium

!\$%&\* '(),-. / 0 1 2 3 4 5 6 7 8 9 : ; ? A B C D E F G H I J K L M N  
O P Q R S T U V W X Y Z a b c d e f g h i j k l m n o p q r s t u v w x  
y z ç £ " ' -

niame, n, *Niamey*

Similar To: Handel Gothic Bold

**!\$%&\* '(),-. / 0 1 2 3 4 5 6 7 8 9 : ; ? A B C D E F G  
H I J K L M N O P Q R S T U V W X Y Z a b c d e f g h i j k l  
m n o p q r s t u v w x y z ç £ " ' -**

noble, n, *NobleFont*

**!\$%&\* '(),-. / 0 1 2 3 4 5 6 7 8 9 : ; ? A B C  
D E F G H I J K L M N O P Q R S T U V W  
X Y Z a b c d e f g h i j k l m n o p q r s t u v  
w x y z ç £ " ' " " -**

nonce, n, *NonceBold*

**!\$%&\* '(),-. / 0 1 2 3 4 5 6 7 8 9 : ; ? A B C D E F G H  
I J K L M N O P Q R S T U V W X Y Z a b c d e f g h i j k l m n  
o p q r s t u v w x y z ç £ " " " -**

outla, n, *Outland*

Similar To: Disco

**!\$%&\* '(),-. / 0 1 2 3 4 5 6 7 8 9 : ; ? A B C D E F G  
H I J K L M N O P Q R S T U V W X Y Z a b c d e f g h i j  
k l m n o p q r s t u v w x y z ç £ " ' -**

parch, n, *Parchment*

Similar To: Ticonderoga

**!\$%&\* '(),-. / 0 1 2 3 4 5 6 7 8 9 : ; ? A B C D E F G H I J  
K L M N O P Q R S T U V W X Y Z a b c d e f g h i j k l m n o p  
q r s t u v w x y z ç £ " ' -**



pirat, n, *Pirate*

Similar To: Pierrot

! \$ % \* ' ( ) , - . / 0 1 2 3 4 5 6 7 8 9 : ; ? A B C D E F G H I J  
K L M N O P Q R S T U V W X Y Z a b c d e f g h i j k l m  
n o p q r s t u v w x y z € £ " "

punct, n, *Punctuate*

Similar To: Pump

! \$ % & \* ' ( ) , - . / 0 1 2 3 4 5 6 7 8 9 : ; ? A B C D E F G H I J K L M  
N O P Q R S T U V W X Y Z a b c d e f g h i j k l m n o p q r s t u v  
w x y z € £ ' -

renal, n, *Renaldo*

Similar To: Rona

! \$ % & \* ' ( ) , - . / 0 1 2 3 4 5 6 7 8 9 : ; ? A B C D E F G H I J K  
L M N O P Q R S T U V W X Y Z a b c d e f g h i j k l m n o p  
q r s t u v w x y z € £ " "

salin, n, *Salina*

Similar To: Tango

! \$ % & \* ' ( ) , - . / 0 1 2 3 4 5 6 7 8 9 : ; ? A B C D E F G H I J K L  
M N O P Q R S T U V W X Y Z a b c d e f g h i j k l m n o p q r s t u v  
w x y z € £ ' ' -

skinn, n, *Skinny*

Similar To: Skin & Bones

! \$ % & \* ' ( ) , - . / 0 1 2 3 4 5 6 7 8 9 : ; ? A B C D E F G H I J K L M N  
O P Q R S T U V W X Y Z a b c d e f g h i j k l m n o p q r s t u v w x  
y z € £ " "

speed, n, *Speedway*

! \$ % & \* ' ( ) , - . / 0 1 2 3 4 5 6 7 8 9 : ; ? A B C D E F G H I J  
K L M N O P Q R S T U V W X Y Z a b c d e f g h i j k l m n o p q r  
s t u v w x y z € £ ' ' -

steph, n, *Stephen*

Similar To: Bulk

**!\$%&\*'( ),-./0123456789:;?ABCDEFGHIJKLM  
NOPQRSTUVWXYZabcdefghijklmnopqrstuvwxyz  
yzç£'' -**

tarza, n, *Tarzan*

**!\$%&\*'( ),-./0123456789:;?ABCDEFGHIJ  
KLMNOPQRSTUVWXYZabcdefghijklmnopqrstuvwxyz  
pqrstuvwxyzç£'' -**

velve, n, *Velveteen*

Similar To: Vellve

**!\$%&\*'( ),-./0123456789:;?ABCDEFGHIJ  
KLMNOPQRSTUVWXYZabcdefghijklmnopqrstuvwxyz  
opqrstuvwxyzç£**

vivia, n, *Vivian*

Similar To: Pretorian

**!\$%&\*'( ),-./0123456789:;?ABCDEFGHI  
HIJKLMNPOQRSTUVWXYZabcdefghijklmnop  
kImnopqrstuvwxyzç£'' -**

waver, n, *Waverly*

Similar To: Bernhard, Antique Bold Condensed Bernard Roman Condensed

**!\$%&\*'( ),-./0123456789:;?ABCDEFGHIJKLMNO  
PQRSTUVWXYZabcdefghijklmnopqrstu  
vwxyzç£'' -**

whits, n, *Whitson*

Similar To: Advertisers Gothic

**!\$%&\*'( ),-./0123456789:;?ABCDEFGHI  
JKLMNOPQRSTUVWXYZabcdefghijklmnop  
opqrstuvwxyzç£'' -**

## Serif Display Fonts - Uppercase Only

---

calvi, n, *Calvin*

Similar To: Le Asterix

!#\$%&'()\*,-./0123456789:;?ABCDEFGHIJK  
LMNOPQRSTUVWXYZ\_'ABCDEFGHIJKLM  
NOPQRSTUVWXYZ¢£-©®™

calvi, i, *CalvinItal*

Similar To: Le Obelix

!#\$%&'()\*,-./0123456789:;?ABCDEFGHIJ  
KLMNOPQRSTUVWXYZ\_'ABCDEFGHIJKL  
MNOPQRSTUVWXYZ¢£-©®™

colbe, n, *Colbert*

Similar To: Ashley Crawford

**!#\$%&'()\*,-./0123456789:;?ABCDEFGHIG  
HIJKLMNOPQRSTUVWXYZ\_¢£-©®™**

georg, n, *Georgianna*

Similar To: Giorgio

**!"\$%&()\*,-./0123456789:;  
?ABCDEFGHIJKLMNO P  
RSTUVWXYZ¢£"**

gradu, n, *Graduate*

Similar To: Collegiate

**!#\$%&'()\*,-./0123456789:;?ABCDEFGHIJ  
KLMNOPQRSTUVWXYZ\_¢£-©®™**

highn, n, *HighNoon*

Similar To: Figaro, Hidalgo

**!"\$%&[],-./0123456789:;?ABCDEFGHIJKLMNOPS  
TUVWXYZ**

orphe, n, *Orpheus*

Similar To: Ortem

**!\$%&'()\*+,-./0123456789:;?ABCDEFGHIJ  
KLMNOPQRSTUVWXYZ'€£“”-**

pinwh, n, *Pinwheel*

Similar To: Pinnocchio, Urban

**!\$%&'()\*+,-./0123456789:;?ABCDEFGHIJK  
L MNOPQRS TU VWXYZ'€£“”**

steam, n, *Steamship*

Similar To: Stencil

**!\$%&'()\*+,-./0123456789:;ABCDEFGHIJ  
KLMNOPQRSTUVWXYZ'€£“”**

templ, n, *Template*

Similar To: Tea Chest

**!\$%&'()\*+,-./0123456789:;ABCDEFGHIJKLMN  
OPQRSTU VWXYZ'€£“”-**

topia, n, *Topiary*

Similar To: Davida

**!# \$%&'()\*+,-./0123456789:;?ABCDEFGHIJK  
LMNOPQRS TU VWXYZ\_ 'AEF € £ - © ® ™**

## San Serif Uppercase Only

---

brutu, n, *Brutus*

Similar To: Balloon Extra Bold

**!# \$% &'()\* ,-. / 0 1 2 3 4 5 6 7 8 9 : ; ? A B C D E F G H I J K L  
M N O P Q R S T U V W X Y Z \_ ' € £ \_ - © ® ™**

bulli, n, *Bullion*

Similar To: Busorama

**! " \$ % & ' ( ) \* , - . / 0 1 2 3 4 5 6 7 8 9 : ; ? A B C D E F G H I J K L  
M N O P Q R S T U V W X Y Z ' € £ " " "**

caric, n, *Caricature*

Similar To: Cartoon Bold

**! \$ % & ( ) \* , - . / 0 1 2 3 4 5 6 7 8 9 : ; ? A B C D E F G H I  
J K L M N O P Q R S T U V W X Y Z € " " " -**

chime, n, *Chimes*

Similar To: China

**! \$ % & ( ) \* , - . / 0 1 2 3 4 5 6 7 8 9 : ; ? A B  
C D E F G H I J K L M N O P Q R S T U V  
W X Y Z € " " " - " -**

concr, n, *Concrete*

Similar To: Publicity Gothic

**! # \$ % & ' ( ) \* , - . / 0 1 2 3 4 5 6 7 8 9 : ; ? A B C D E F G  
H I J K L M N O P Q R S T U V W X Y Z \_ ' € £ - © ® ™**

copyb, n, *Copybook*

Similar To: Copperplate, Copperplate Gothic, Spartan

**! \$ % & ' ( ) \* , - . / 0 1 2 3 4 5 6 7 8 9 : ; ? A B C D E F G H I J  
K L M N O P Q R S T U V W X Y Z ' € £ " " " - " -**

jelly, n, *Jellybean*

Similar To: Jumbo

**!\$%&'()\*+,-./0123456789:;?A  
B CDEFGHIJKLMNOPQRSTUVWXYZ  
W XYZ ç € - " ' " "**

manha, n, *Manhattan*

Similar To: Organda, Avondale Bold

**!# \$%&'()\*+,-./0123456789:;? ð ABCDEFGHIJKLMNO  
PQRSTUVWXYZ \_ ' A ç £ - © ® ™**

micro, n, *Microbus*

Similar To: Micro Extended Bold, Microgram, Eurostyle Extended, Microgramma

**!\$%&'()\*+,-./0123456789:;?A  
B CDEFGHIJKLMNOPQRSTU  
V WXYZ ç " " " "**

playm, n, *Playmate*

Similar To: Plaza, Playboy

**!\$%&'()\*+,-./0123456789:;? ABCDEFGHIJKLMNOPQR  
S TUVWXYZ - € " " "**

---

## Creative Uppercase Only

---

accor, n, *Accord*

Similar To: Accant

!@%&'()\*+,-./0123456789:;?A B C D E  
F G H I J K L M N O P Q R S T U V W X Y Z [ \ ] ^ \_ `

altoo, n, *Altoona*

Similar To: Fat Cat

!#%&'()\*+,-./0123456789:;?A B C D E  
F G H I J K L M N O P Q R S T U V W X Y Z \_ ' @ - ©  
® ™

bande, n, *Banderole*

Similar To: Black Line

!\$% '( ) \* , - . / 0 1 2 3 4 5 6 7 8 9 : ; ? A B C D E F G H I J K L  
M N O P Q R S T U V W X Y Z c " #

burge, n, *Burger*

!@%&'()\*+,-./0123456789:;?A B C D E  
F G H I J K L M N O P Q R S T U V W X Y Z [ \ ] ^ \_ `

bustl, n, *Bustle*

Similar to: Buxom

!\$%&'()\*+,-./0123456789:;?A B C D E F G H I J K  
L M N O P Q R S T U V W X Y Z [ ] ^

clipb, n, *Clipboard*

Similar to: Paperclip

!\$%&'()\*+,-./0123456789:;?A B C D E F G H I  
J K L M N O P Q R S T U V W X Y Z [ ] ^

doric, n, *DoricFont*

Similar to: Delphian

!\$%&()\*'.,-./0123456789:;?ABCDEFGHIJKLM  
N OPQRSTUVWXYZ¢'

dress, n, *Dressmaker*

Similar to: Dresden

!\$%&'()\*'.,-0123456789:;?ABCDEFGHI  
JKLMNOPQRSTUVWXYZ“”

duoto, n, *DuoTone*

Similar to: DuoSolid

!\$%&()\*'.,-./0123456789:;?ABCDE  
FGHIJKLMNOPQRSTUVWXYZ¢“”’  
—

ermin, n, *Ermine*

Similar to: Erbar

!\$%&()\*'.,-./0123456789:;?ABCDEFGHIKL  
M NOPQRSTUVWXYZ¢“.”-

green, n, *Greenland*

Similar to: Stop

!\$%&'()\*'.,-./0123456789:;?ABCDEFGHIJK  
L MNOPQRSTUVWXYZ -

leger, n, *Legerdemain*

Similar to: Elektrik

!\$%&()\*'.,-0123456789:;?ABCDEFGHIJK  
L MNOPQRSTUVWXYZ¢“”-



limou, n, *Limousine*

Similar To: Litzenburg

! \$ % & ( ) \* , - . / 0 1 2 3 4 5 6 7 8 9 : ; ? A B C D E F G H I J K L M N O P Q R S  
T U V W X Y Z [ \ ] ^ \_ `

marbl, n, *Marble*

Similar To: Mark III

! " \$ % & \* , . / 0 1 2 3 4 5 6 7 8 9 : ; ? A B C D E F G H I J K L  
M N O P Q R S T U V W X Y Z [ ] ^ \_

maver, n, *Maverick*

Similar To: Maximus, Maximus Burkey

! \$ % & ( ) \* , - . / 0 1 2 3 4 5 6 7 8 9 : ; ? A B C D E F G H I J K L M N O  
P Q R S T U V W X Y Z [ \ ] ^ \_ `

mycal, n, *Mycalc*

Similar To: Computer, Micr, Moore Computer

! \$ % & ( ) \* , . / 0 1 2 3 4 5 6 7 8 9 : ; ? A B C D E F G H I J K L M  
N O P Q R S T U V W X Y Z [ \ ] ^ \_ `

neptu, n, *Neptune*

Similar To: Neon

! \$ % & ( ) \* , - . / 0 1 2 3 4 5 6 7 8 9 : ; ? A B C D E F G H I J K  
L M N O P Q R S T U V W X Y Z [ \ ] ^ \_ `

oldwe, n, *OldWest*

Similar To: Orleans Open

! \$ & ' , - . / 0 1 2 3 4 5 6 7 8 9 : ; ? A B C D E F G H I J K L M N  
O P Q R S T U V W X Y Z [ ] ' ^ \_ `

patri, n, *Patriarch*

Similar To: Patriot

! \$ % & ( ) \* , . / 0 1 2 3 4 5 6 7 8 9 : ; ? A B C D E F G H I J K  
L M N O P Q R S T U V W X Y Z [ \ ] ^ \_ `

prime, n, *Primer*

Similar To: Premium Shaded

!\$%&()\*^+,-./0123456789:;?ABCDEFGHIJKLMN  
OPQRSTUVWXYZ€'"'-

quive, n, *Quiver*

Similar To: LCD Bold, Quartz Bold

!"#\$%&'()\*^+,-./0123456789:;?@ABCDEFGHIJKLMN  
OPQRSTUVWXYZ[]'{}€'"'-°-©®™

quive, i, *QuiverItal*

Similar To: LCD Italic, Quartz Italic

!"#\$%&'()\*^+,-./0123456789:;?@ABCDEFGHIJKLMN  
OPQRSTUVWXYZ[]'{}€'"'-°-©®™

quive, l, *QuiverLight*

Similar To: LCD, Quartz

!#\$%&'()\*^+,-./0123456789:;?ABCDEFGHIJKLMN  
OPQRSTUVWXYZ\_ '€-©®™

rigam, n, *Rigamarole*

Similar To: Riccardo

!\$%&()\*^+,-./0123456789:;?ABCDEFGHI  
JKLMNOPQRSTUVWXYZ€<sup>reg</sup>'

shott, n, *ShotThru*

Similar To: Shotgun

!\$%&()\*^+,-./0123456789:;?ABCDEFGHI  
JKLMNOPQRSTUVWXYZ'

stupe, n, *Stupendous*

Similar To: Superstar

!\$%&()\*^+,-./0123456789:;?ABCDEFGHIJ  
KLMNOPQRSTUVWXYZ€'"'-

## FontBank Fonts Sorted by FontBank Name

---

Abbess, 55	Burger, 67	DomesticTyper, 27	Hansen, 28
Acappella, 55	Business, 57	DomesticUncial, 58	Harvest, 37
AcclamaItal, 16	Bustle, 67	Dominican, 48	HarvestItal, 37
Acclamation, 16	CacheExtraBold, 17	DoricFont, 68	HeftyFont, 59
Accord, 67	CacheHeavy, 17	Doughboy, 28	Helsinki, 28
AcmeFont, 26	CalentAdBold, 17	Dressmaker, 68	Hemmert, 44
Acropolis, 55	Calligraphic, 48	DuoTone, 68	Henning, 29
Addled, 55	CalmarItal, 40	Dynamic, 23	Heroic, 37
Alfredo, 46	Calvin, 63	DynamicItal, 23	HeroicBold, 37
Alison, 55	CalvinItal, 63	Egbert, 58	HeroicHeavyItal, 37
Altoona, 67	Caricature, 65	EgyptoHeavy, 28	HighNoon, 63
Amethyst, 55	Caslon, 18	Elysee, 58	Hombre, 49
Andorra, 56	Chickadee, 48	Emmett, 53	Hubris, 29
Anglophile, 46	Chimes, 65	Enliven, 58	Ingenius, 49
Anthony, 16	Clarendon, 27	Enterz, 28	Insight, 37
AnthonyItal, 16	Cleveland, 18	Ermine, 68	Italianate, 29
AnticFont, 56	ClevelandHeavyItal, 18	Fiddle, 53	Jasper, 59
Appleby, 56	ClevelandItalBold, 18	FiddleItal, 53	Jellybean, 66
Articulate, 46	Clipboard, 67	Flanders, 34	JernaBold, 20
Aubrey, 56	Coaster, 57	FlandersItal, 34	JernaItal, 20
Author, 46	Cohesion, 27	Fleetwood, 49	Kabled, 38
Ballet, 52	Colbert, 63	Flourish, 49	Klaven, 38
BalletEngraved, 52	Coleridge, 48	FocusFont, 44	KlavenItal, 38
Balthazar, 46	Commons, 27	Fortana, 34	KlingBold, 20
Banderole, 67	Concrete, 65	FortanaItal, 34	KlingItal, 20
Bandicoot, 26	Contempo, 48	FranklyGothic, 34	Krypton, 49
Bangle, 46	Coolsville, 27	Freshet, 28	Legacy, 50
Baskerville, 26	Copybook, 65	FrintHeavy, 35	Legerdemain, 68
Bastion, 33	Corporate, 57	FrintItal, 35	Limousine, 69
BastionItal, 33	Crandall, 57	Frisian, 58	Lionel, 29
Battle, 16	Crimmon, 18	Fulton, 53	Lissen, 38
BattleItal, 16	CrimmonItal, 19	Fustian, 35	LissenItal, 38
BendalGothicItal, 56	Cursive, 48	FustianItal, 35	Lovejoy, 44
Benson, 26	Dayton, 52	Futana, 35	Lullaby, 59
Bering, 26	DaytonItal, 53	FutanaItal, 35	Lunetta, 29
Biorst, 47	Decollage, 52	Gallant, 36	LyndalBold, 20
Blarney, 47	DecorateBoldItal, 52	GallantItal, 36	LyndalItal, 20
Blocky, 56	DecorateItal, 52	Gangplank, 58	Mallet, 29
BodoniExtra, 17	Delavan, 19	GaramondAmerican, 28	Manhattan, 66
BodoniHeavy, 17	DelavanItal, 19	Gaucher, 53	Manorly, 50
BodoniOpen, 17	Deneane, 57	Georgianna, 63	Marble, 69
BolsterBold, 44	Détente, 27	Glockenspiel, 44	Margaret, 50
Borealis, 47	Diamond, 33	GowdieExtra, 19	Marjorie, 45
Brandish, 57	DiamondItal, 33	GowdieItalian, 19	Marker, 47
Brussels, 47	DicotBold, 34	GowdieOldstyle, 19	Martina, 47
Brutus, 65	DicotLight, 33	Graceful, 49	Maverick, 69
Bubbly, 57	DicotMedium, 33	Graduate, 63	Megaton, 59
Bullion, 65	DomesticText, 48	Greenland, 68	MelodBold, 54

## Chapter 2: Fonts

---

MelodItal, 54	Orpheus, 64	RastenMedium, 21	Stupendous, 70
MelodMedium, 53	Outland, 60	Reinhard, 51	SubotBold, 31
MercyBold, 21	Padula, 50	Renaldo, 61	TalonBold, 23
MercyItal, 21	Palent, 41	Rhythm, 45	TalonItal, 24
Mesmer, 38	PalentItal, 41	Rigamarole, 70	TanbulBlack, 24
MesmerItal, 39	Parade, 30	RilloHeavy, 22	TanbulHeavy, 24
Microbus, 66	Parchment, 60	RilloItal, 22	TanbulItal, 24
MigraHeavy, 39	Patriarch, 69	Roland, 22	Tarzan, 62
MigraItal, 39	PenulLtItal, 54	RolandItal, 22	TempeHvItal, 36
Minerva, 59	Penultimate, 54	Rondalo, 45	Tempest, 36
Mingle, 45	PenultimateItal, 54	RoostHeavy, 42	TempestHeavy, 36
Monroe, 18	Perdure, 30	RoostItal, 42	TempestItal, 36
Monster, 59	Periapt, 30	RowdyHeavy, 31	Template, 64
Moonbeam, 60	Pesten, 30	Salina, 61	Toledo, 51
Muriel, 50	PhrasExBold, 42	Sanchion, 22	Topiary, 64
Mycalc, 69	PhrasticBold, 41	SanchionItal, 22	TyperHeavy, 24
Nantun, 39	PhrasticExtraItal, 42	SarenBlack, 23	TyperItal, 24
NantunItal, 39	PhrasticLight, 41	SarenItal, 23	Unpact, 43
Neptune, 69	PhrasticMedium, 41	ScrimBlack, 31	UnpactItal, 43
Niamey, 60	Pinwheel, 64	Sentry, 42	Valken, 43
NobleFont, 60	Pirate, 61	SentryItal, 42	ValkenItal, 43
NonceBold, 60	Playmate, 66	ShotThru, 70	ValkenMedium, 43
Notram, 30	Plitter, 31	SilvaBold, 40	Velveteen, 62
November, 30	Primer, 70	SilvaItal, 41	Vernique, 32
Oblast, 39	Prosaic, 50	SintoHeavy, 23	Vivian, 62
OblastItal, 39	PTBoat, 31	Skinny, 61	Watson, 32
OblemBold, 40	Punctuate, 61	Speedway, 61	Waverly, 62
OblemItal, 40	QuidBold, 21	Splash, 51	Whitson, 62
Octogon, 40	QuidItal, 21	Spratly, 31	WistenBold, 25
OldWest, 69	Quiver, 70	Sprite, 51	WistenMedium, 25
Olivette, 50	QuiverItal, 70	Steamship, 64	WordaBold, 32
Olivian, 40	QuiverLight, 70	Stephen, 62	
OpineHeavy, 45	Rasten, 21	Stunning, 51	

## FontBank Fonts Sorted by Similar To

---

**Aachen Bold**, *FontBank Name:* AcmeFont  
**Abbott Old Style**, *FontBank Name:* Abbess  
**Abilene**, *FontBank Name:* Frisian  
**Academy Engraved**, *FontBank Name:* BodoniOpen  
**Acapulco Light**, *FontBank Name:* Acappella  
**Accant**, *FontBank Name:* Accord  
**Accent**, *FontBank Name:* Marker  
**Accolade Bold**, *FontBank Name:* Acclamation  
**Ad Bold Polka**, *FontBank Name:* Dominican  
**Ad Lib**, *FontBank Name:* Addled  
**Advertisers Gothic**, *FontBank Name:* Whitson  
**AG Buch Swiss**, *FontBank Name:* Harvest, Heroic,  
**Agraphicus**, *FontBank Name:* Acropolis  
**Albers**, *FontBank Name:* Dayton, Fulton  
**Albertus Extra Bold**, *FontBank Name:* Anthony  
**Aldine**, *FontBank Name:* Benson, GaramondAmerican  
**Alexandra**, *FontBank Name:* Cursive  
**Alfereta**, *FontBank Name:* Alfredo  
**Alpha Gothic**, *FontBank Name:* Nantun,  
**Alphatura**, *FontBank Name:* Tempest  
**Alphavers**, *FontBank Name:* Unpact  
**Amelia**, *FontBank Name:* Amethyst  
**American Text**, *FontBank Name:* DomesticText  
**American Typewriter**, *FontBank Name:* DomesticTyper  
**American Uncial**, *FontBank Name:* DomesticUncial  
**Andover Palatino**, *FontBank Name:* Parade  
**Andromeda**, *FontBank Name:* Andorra  
**Anglo**, *FontBank Name:* Anglophile  
**Anthem**, *FontBank Name:* AnticFont  
**Antique**, *FontBank Name:* Waverly  
**Antique Olive**, *FontBank Name:* Oblast, Olivian  
**Apache**, *FontBank Name:* Toledo  
**Ark Brush Script**, *FontBank Name:* Marker  
**Ashley Crawford**, *FontBank Name:* Colbert  
**Avondale Bold**, *FontBank Name:* Manhattan  
**Balladeer**, *FontBank Name:* Biorst  
**Ballardville**, *FontBank Name:* Mallet  
**Balloon Extra Bold**, *FontBank Name:* Brutus  
**Balzac**, *FontBank Name:* Balthazar  
**Baskerline**, *FontBank Name:* Baskerville

**Baskerville Bold**, *FontBank Name:* Baskerville  
**Bembo**, *FontBank Name:* Benson  
**Benguiat Book**, *FontBank Name:* Bandicoot, BendalGothicItal  
**Berling Bold**, *FontBank Name:* Bering  
**Bernard Roman Condensed**, *FontBank Name:* Waverly  
**Bijou**, *FontBank Name:* Bangle  
**Bison**, *FontBank Name:* Sprite  
**Black Line**, *FontBank Name:* Banderole  
**Blippo**, *FontBank Name:* Brandish  
**Bloc**, *FontBank Name:* Blocky  
**Boa Script**, *FontBank Name:* Krypton  
**Bodoni Engraved**, *FontBank Name:* BodoniOpen  
**Bolt Bold**, *FontBank Name:* BolsterBold  
**Boutique**, *FontBank Name:* Aubrey  
**Brittanic Black**, *FontBank Name:* Bastion  
**Broadway**, *FontBank Name:* Ballet, Decollage, DecorateItal  
**Brush Script**, *FontBank Name:* Brussels, Martina  
**Bubble Dubble**, *FontBank Name:* Bubbly  
**Bulk**, *FontBank Name:* Stephen  
**Busorama**, *FontBank Name:* Bullion  
**Buxom**, *FontBank Name:* Bustle  
**Canterbury**, *FontBank Name:* Crimmon  
**Cantoria**, *FontBank Name:* Crimmon  
**Cartoon Bold**, *FontBank Name:* Caricature  
**Caslon Adbold**, *FontBank Name:* CalentAdBold, Caslon, Monroe  
**Chelmsford**, *FontBank Name:* Octogon, CalmariItal, SilvaBold  
**Chevalier**, *FontBank Name:* Blarney  
**China**, *FontBank Name:* Chimes  
**Claire New Bold Italic**, *FontBank Name:* MercyBold  
**Clarendon Black**, *FontBank Name:* Clarendon  
**Clarion**, *FontBank Name:* Clarendon  
**Claro**, *FontBank Name:* Mesmer  
**Clearface**, *FontBank Name:* Cleveland, Hemmert  
**Cochin Bold**, *FontBank Name:* LyndalBold  
**Collegiate**, *FontBank Name:* Graduate  
**Commercial Script**, *FontBank Name:* Author  
**Compacta Light**, *FontBank Name:* Corporate  
**Computer**, *FontBank Name:* Mycalc  
**Congress Black**, *FontBank Name:* Commons  
**Contact**, *FontBank Name:* Cohesion  
**Cooper Black**, *FontBank Name:* Coolsville  
**Copperplate**, *FontBank Name:* Copybook  
**Coventry Script**, *FontBank Name:* Author  
**Cushing**, *FontBank Name:* CacheHeavy  
**Dauida**, *FontBank Name:* Topiary  
**Della Robbia**, *FontBank Name:* Crimmon

**Delphian**, *FontBank Name:* DoricFont  
**Diamante**, *FontBank Name:* Diamond  
**Digital**, *FontBank Name:* DicotBold  
**Disco**, *FontBank Name:* Outland  
**Dom Casual**, *FontBank Name:* Dominican  
**Domino**, *FontBank Name:* Doughboy  
**Dresden**, *FontBank Name:* Dressmaker  
**DryGulch**, *FontBank Name:* Frisian  
**DuoSolid**, *FontBank Name:* DuoTone  
**Dutch**, *FontBank Name:* Caslon, TalonBold  
**Dynamo**, *FontBank Name:* November  
**Egyptian Bold Extended**, *FontBank Name:* EgyptoHeavy  
**Eight Ball**, *FontBank Name:* Egbert  
**Elektrik**, *FontBank Name:* Legerdemain  
**Engraved**, *FontBank Name:* BalletEngraved  
**Enigma**, *FontBank Name:* Enliven  
**Erbar**, *FontBank Name:* Ermine  
**Eric**, *FontBank Name:* Gallant  
**Eurostyle Extended**, *FontBank Name:* Microbus  
**Fat Cat**, *FontBank Name:* Altoona  
**Fette Fraktur**, *FontBank Name:* Manorly  
**Figaro**, *FontBank Name:* HighNoon  
**Florentine**, *FontBank Name:* Coleridge, Flourish  
**Flyer Extra Bold Condensed**, *FontBank Name:* Flanders  
**Folio Extra Bold**, *FontBank Name:* FocusFont  
**Fraktur Bold**, *FontBank Name:* Manorly  
**Frankfurter**, *FontBank Name:* Valken  
**Franklin Gothic**, *FontBank Name:* FranklyGothic, FrintItal  
**Friz Quadrata**, *FontBank Name:* QuidBold  
**Frozen Alaska**, *FontBank Name:* Freshet  
**Frutiger**, *FontBank Name:* Fustian  
**Futura**, *FontBank Name:* Futana, Tempest Dayton  
**Galliard**, *FontBank Name:* Monroe  
**Garamond**, *FontBank Name:* GaramondAmerican  
**Gatsby**, *FontBank Name:* Fiddle  
**Geometric**, *FontBank Name:* Roland, Tempest  
**Gesh Export**, *FontBank Name:* Gangplank  
**Gill Sans**, *FontBank Name:* Gallant, Insight  
**Gillies Gothic Bold**, *FontBank Name:* Contempo  
**Giorgio**, *FontBank Name:* Georgianna  
**Giotto Bold**, *FontBank Name:* Corporate  
**Glib**, *FontBank Name:* Gallant  
**Global**, *FontBank Name:* Glockenspiel  
**Gothic**, *FontBank Name:* Nantun  
**Goudy**, *FontBank Name:* GowdieExtra  
**Griffo**, *FontBank Name:* Benson

**Handel Gothic Bold**, *FontBank Name:* Niamey  
**Hawthorn**, *FontBank Name:* Delavan  
**Haywood**, *FontBank Name:* Martina  
**Helios II**, *FontBank Name:* Vernique, Heroic  
**Hellenic Wide**, *FontBank Name:* HeftyFont  
**Helvetica Condensed**, *FontBank Name:* Harvest  
**Helvetica**, *FontBank Name:* Heroic  
**Hidalgo**, *FontBank Name:* HighNoon  
**Hobo**, *FontBank Name:* Gaucher  
**Honda**, *FontBank Name:* Hombre  
**Horley Old Style Roman Bold**, *FontBank Name:* Henning  
**Humanist**, *FontBank Name:* Gallant  
**Incised**, *FontBank Name:* Oblast, Olivian  
**Ingrid**, *FontBank Name:* Ingenius  
**Inscriptional**, *FontBank Name:* Crimmon  
**Italia**, *FontBank Name:* Italianate  
**ItalicDeko Black Ital**, *FontBank Name:* DaytonItal  
**Japanette**, *FontBank Name:* Jasper  
**Jenson Extra Bold**, *FontBank Name:* Detente  
**Jessica**, *FontBank Name:* JernaItal  
**Joanna**, *FontBank Name:* JernaBold  
**Jumbo**, *FontBank Name:* Jellybean  
**Kabel Ultra Bold**, *FontBank Name:* Kabled, Klaven  
**Kalligraphia**, *FontBank Name:* Fleetwood  
**Katrina Incised**, *FontBank Name:* QuidBold  
**Kells**, *FontBank Name:* Padula  
**Korinna Heavy**, *FontBank Name:* KlingBold  
**LCD Bold**, *FontBank Name:* Quiver  
**Le Asterix**, *FontBank Name:* Calvin  
**Le Cochin**, *FontBank Name:* LyndalBold  
**Le Obelix**, *FontBank Name:* CalvinItal  
**Leamington**, *FontBank Name:* Lionel  
**Legend**, *FontBank Name:* Legacy  
**Liberty**, *FontBank Name:* LyndalBold  
**Litera**, *FontBank Name:* Lissen  
**Litzenburg**, *FontBank Name:* Limousine  
**Looking Glass**, *FontBank Name:* Elysee  
**Machine**, *FontBank Name:* Diamond  
**Mallard**, *FontBank Name:* Mallet  
**Mark III**, *FontBank Name:* Marble  
**Maximus**, *FontBank Name:* Maverick  
**Megaron**, *FontBank Name:* Harvest, Heroic  
**Melior**, *FontBank Name:* Mallet  
**Memphis**, *FontBank Name:* Periapt  
**Metrion**, *FontBank Name:* Mallet  
**Metropolis Bold**, *FontBank Name:* Megaton



**Micr**, *FontBank Name: Mycalc*  
**Micro Extended Bold**, *FontBank Name: Microbus*  
**Microgram**, *FontBank Name: Microbus*  
**Mimi Slender**, *FontBank Name: Minerva*  
**Mistral**, *FontBank Name: Borealis*  
**Modern**, *FontBank Name: MercyBold*  
**Monterey**, *FontBank Name: Penultimate*  
**Moon Medium**, *FontBank Name: Moonbeam*  
**Moore Computer**, *FontBank Name: Mycalc*  
**Mr. Big**, *FontBank Name: Monster*  
**Murray**, *FontBank Name: Muriel*  
**Musica**, *FontBank Name: Octogon, CalmariItal, SilvaBold*  
**Neon**, *FontBank Name: Neptune*  
**NeufvilleDeko Black**, *FontBank Name: Dayton*  
**News Gothic**, *FontBank Name: Nantun*  
**News**, *FontBank Name: Pesten*  
**Newton**, *FontBank Name: Harvest, Heroic,*  
**Octog Bold**, *FontBank Name: Octogon*  
**Olive Choc**, *FontBank Name: Olivette*  
**Olivia**, *FontBank Name: Oblast, Olivian*  
**Ondine**, *FontBank Name: Calligraphic*  
**Optim Black**, *FontBank Name: SilvaBold*  
**Optima**, *FontBank Name: Octogon, CalmariItal, SilvaBold*  
**Optimist**, *FontBank Name: SilvaBold*  
**Oracle**, *FontBank Name: Octogon, CalmariItal, SilvaBold*  
**Organda**, *FontBank Name: Manhattan*  
**Orleans Open**, *FontBank Name: OldWest*  
**Ornitone Heavy**, *FontBank Name: OpineHeavy*  
**Ortem**, *FontBank Name: Orpheus*  
**Pabst**, *FontBank Name: Coolsville*  
**Palace**, *FontBank Name: Coleridge*  
**Palacio**, *FontBank Name: Parade*  
**Paladin**, *FontBank Name: Prosaic*  
**Palatino**, *FontBank Name: Parade*  
**Paperclip**, *FontBank Name: Clipboard*  
**Pasadena**, *FontBank Name: PhrasticBold*  
**Patina**, *FontBank Name: Parade*  
**Patriot**, *FontBank Name: Patriarch*  
**Peignot**, *FontBank Name: PenulltItal*  
**Pendrawn**, *FontBank Name: Bastion*  
**Penyoe**, *FontBank Name: Penultimate*  
**Pierrot**, *FontBank Name: Pirate*  
**Pinochio**, *FontBank Name: Pinwheel*  
**Pittsburgh Black**, *FontBank Name: Coolsville*  
**Plantin**, *FontBank Name: Pplitter*  
**Playbill**, *FontBank Name: PTBoat*

**Playboy**, *FontBank Name: Playmate*  
**Plaza**, *FontBank Name: Playmate*  
**Premier Lightline**, *FontBank Name: Fiddle*  
**Premium Shaded**, *FontBank Name: Primer*  
**Pretorian**, *FontBank Name: Vivian*  
**Primus**, *FontBank Name: Pesten*  
**PT Barnum**, *FontBank Name: PTBoat*  
**Publicity Gothic**, *FontBank Name: Concrete*  
**Pump**, *FontBank Name: Punctuate*  
**Pyramid**, *FontBank Name: Periapt*  
**Quartz**, *FontBank Name: Quiver*  
**Ragtime Heavy**, *FontBank Name: RoostHeavy*  
**Raleigh Bold**, *FontBank Name: RowdyHeavy*  
**Regency Script**, *FontBank Name: Coleridge*  
**Reiner Black**, *FontBank Name: Reinhard*  
**Review**, *FontBank Name: RoostItal*  
**Revival**, *FontBank Name: CacheHeavy*  
**Revue**, *FontBank Name: RoostHeavy*  
**Riccardo**, *FontBank Name: Rigamarole*  
**Right Bank**, *FontBank Name: Lullaby*  
**Ritz**, *FontBank Name: Ballet, Decollage, DecorateBoldItal*  
**Rockwell**, *FontBank Name: Roland*  
**Romana Black Agency**, *FontBank Name: Delavan*  
**Rona**, *FontBank Name: Renaldo*  
**Ronda**, *FontBank Name: Rondalo*  
**Sans Serif Bold Condensed**, *FontBank Name: Heroic*  
**Script**, *FontBank Name: Coleridge*  
**Seagull**, *FontBank Name: SarenBlack, SarenItal*  
**Seigfreid**, *FontBank Name: Appleby*  
**Shelley Andante**, *FontBank Name: Author*  
**Shotgun**, *FontBank Name: ShotThru*  
**Signature**, *FontBank Name: Dynamic, Sanchion, SintoHeavy*  
**Skin & Bones**, *FontBank Name: Skinny*  
**Souvenir Bold**, *FontBank Name: SubotBold*  
**Spartan**, *FontBank Name: Copybook*  
**Spartan Photura**, *FontBank Name: Tempest*  
**Sprint**, *FontBank Name: Splash*  
**Stencil**, *FontBank Name: Steamship*  
**Stop**, *FontBank Name: Greenland*  
**Stratford Extra Bold**, *FontBank Name: ScrimBlack*  
**Stubserif**, *FontBank Name: KlingBold*  
**Studio Bold**, *FontBank Name: Stunning*  
**Stymie**, *FontBank Name: Periapt*  
**Superstar**, *FontBank Name: Stupendous*  
**Syntax Ultra Black**, *FontBank Name: Sentry*  
**Tabasco**, *FontBank Name: Mingle*

**Tango**, *FontBank Name:* Salina  
**Tea Chest**, *FontBank Name:* Template  
**Techno**, *FontBank Name:* Tempest  
**Thickline**, *FontBank Name:* Decollage, DecorateBoldItal  
**Thinline**, *FontBank Name:* Ballet  
**Ticonderoga**, *FontBank Name:* Parchment  
**Times New Roman**, *FontBank Name:* TanbulBlack  
**Toledo**, *FontBank Name:* TalonBold  
**Tramp**, *FontBank Name:* Gaucher  
**Trooper, Roman Oblique**, *FontBank Name:* TalonBold  
**Twentieth Century**, *FontBank Name:* Tempest  
**Typewriter Heavy Italic**, *FontBank Name:* TyperHeavy  
**Univers**, *FontBank Name:* Unpact  
**University**, *FontBank Name:* Chickadee  
**Uranus**, *FontBank Name:* Mallet  
**Urban**, *FontBank Name:* Pinwheel  
**VAG Rundschrift Black**, *FontBank Name:* Valken  
**Vellve**, *FontBank Name:* Velveteen  
**Windsor**, *FontBank Name:* WistenBold  
**Winslow**, *FontBank Name:* WistenBold  
**Within**, *FontBank Name:* WordaBold  
**Wittenberger**, *FontBank Name:* Manorly  
**Worcester Round Bold**, *FontBank Name:* Watson  
**Yale Script**, *FontBank Name:* Cursive  
**Yorkshire**, *FontBank Name:* Cursive  
**Zanzibar**, *FontBank Name:* Articulate  
**Zapf Aldine**, *FontBank Name:* Parade  
**Zapf Elliptical**, *FontBank Name:* Mallet  
**Zapf Humanist**, *FontBank Name:* Octogon, CalmarItal, SilvaBold  
**Zephyr Script**, *FontBank Name:* Borealis

**THIS PAGE INTENTIONALLY LEFT BLANK**

## Chapter 3: Installing Fonts

MECCA 2000 version 5.02 provides increased support for TrueType (TT) fonts as well as the Adobe Type 1 and OpenType formats. Use the Font Install Program for installing any new fonts.

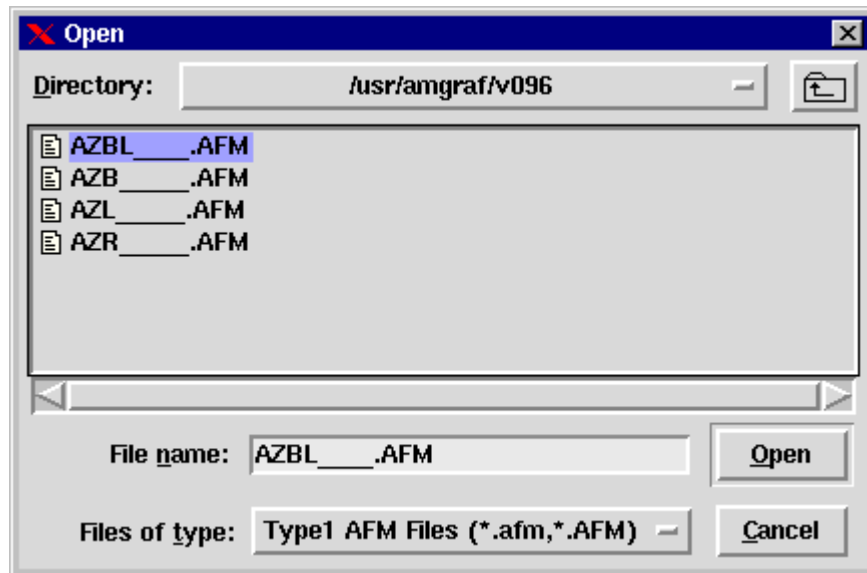
**Note 1:** It looks at current fonts on the system and only allows you to process new fonts. It does not allow any re-processing and overwriting of existing fonts.

**Note 2:** If the user running MECCA 2000 has write permission to the M\_FONTS directory, MECCA 2000 will automatically add the menu entry **Install Type-1 Font** in Project - Batch & More menu. Or, the M\_FONTS owner can type in at the root prompt, `/usr/bin/amgraf/t1install.tk` to start the font installation procedure.

### Installing Type-1 Fonts

---

An open files dialog will appear so that you can browse for the Type-1 AFM font files. Browse for the directory holding the .AFM and .PFB font files. Clicking on any one of the .AFM files will display all *uninstalled fonts* located in that directory.



Selecting [Open] will bring up the following dialog.

The dialog presents a list, containing font names, their MECCA font mnemonic/style names, and check-button for each of the new fonts that it finds. A "new font" here means one that does not already exist in the "laser.sub" file. For convenience, one of two listing groups can be selected: New Fonts, or All Fonts. Please note that the "All Fonts" lists all

---

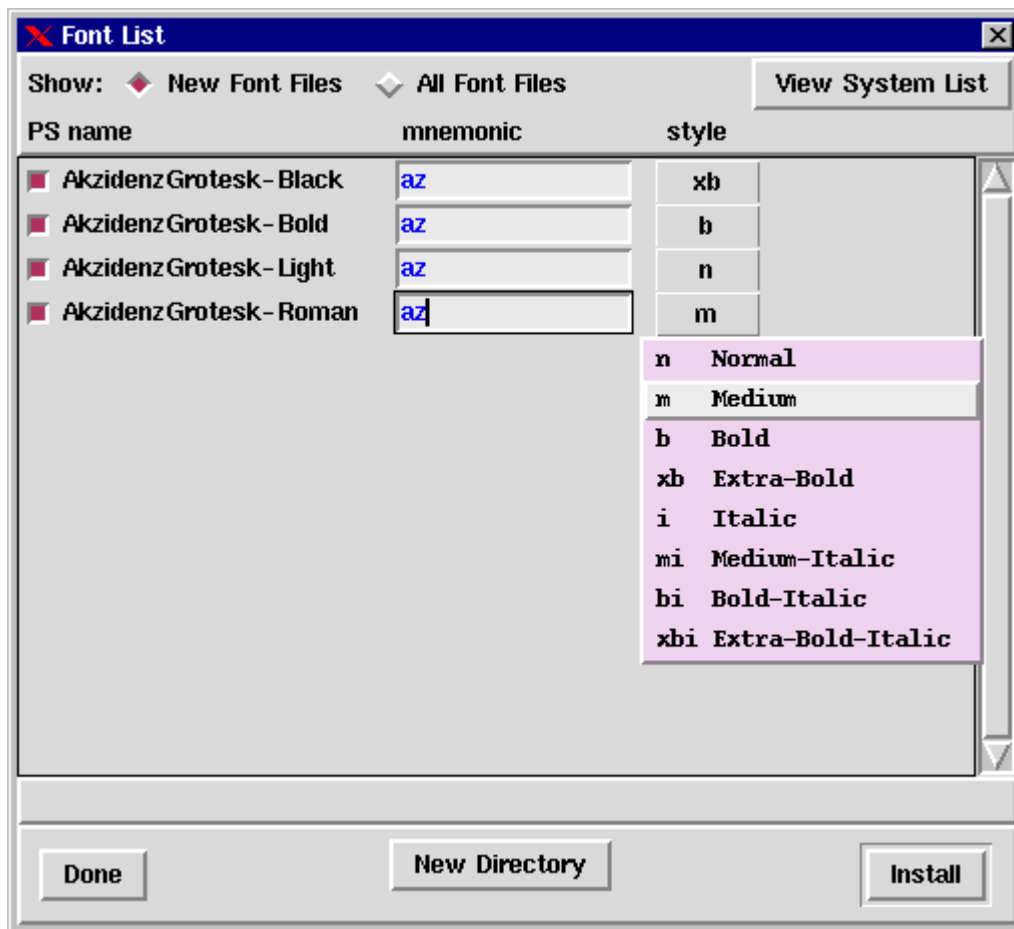
## Chapter 3: Installing Type-1 Fonts

---

font files in the directory that you have indicated above, not "all of my fonts that have been installed". To see what fonts you already have, press the "View System List" button.

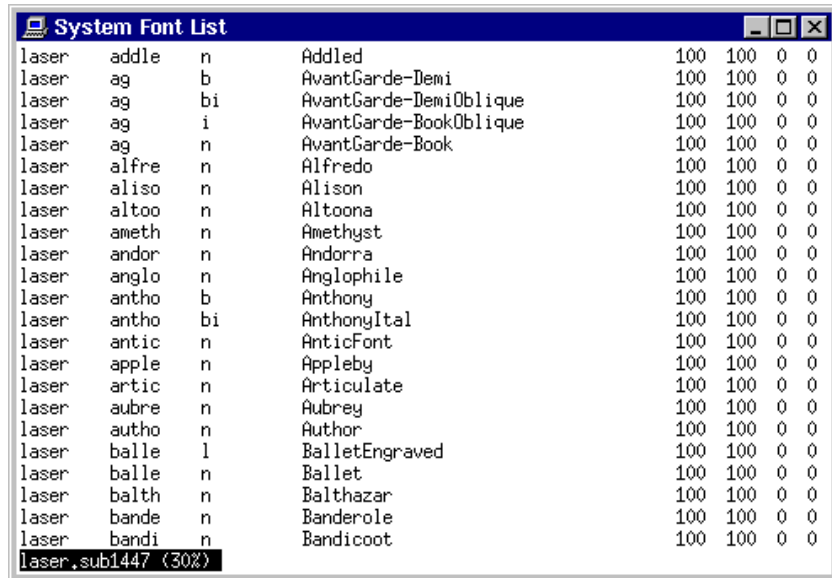
Assign a unique font mnemonic to the family, along with font style associations to each style. Uncheck a font's check-button to not install it. If you need more styles than are available (18), you will need to break up the large font family into smaller groups.

When you are done setting up mnemonic and styles for the new fonts, press the Install button. The font installer will then verify the font mnemonic and style names do not duplicate any of your existing fonts, and generate all necessary data for the fonts. If you see a font mnemonic turned red, it means that mnemonic/style is already in use, so you must change them. To assist your decision making, use "View System List" to bring up your current "laser.sub" file to see what fonts are already installed.



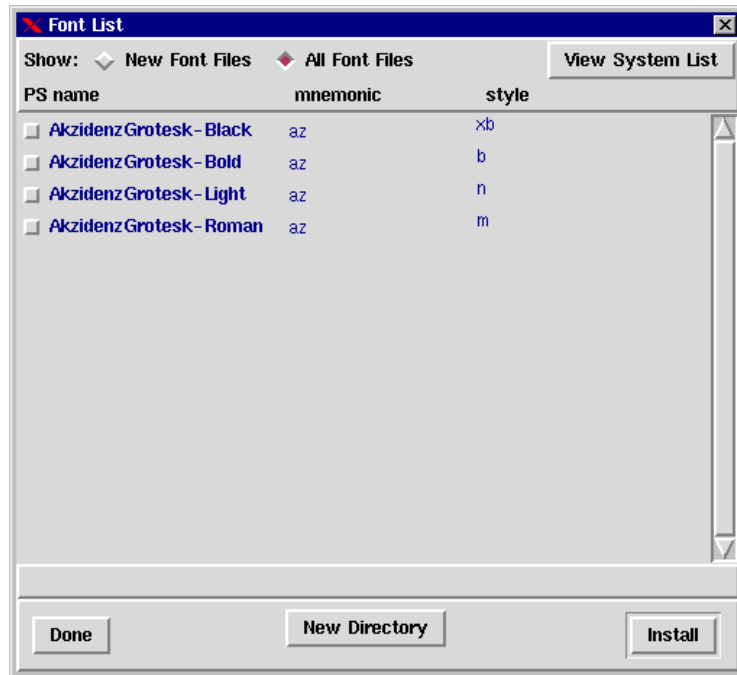
The [View System List] is available for looking at existing font mnemonics. Pressing the [space bar] will scroll one page, pressing [Enter] will scroll one line, and [q] will quit you out of the list.

## Chapter 3: Installing Type-1 Fonts

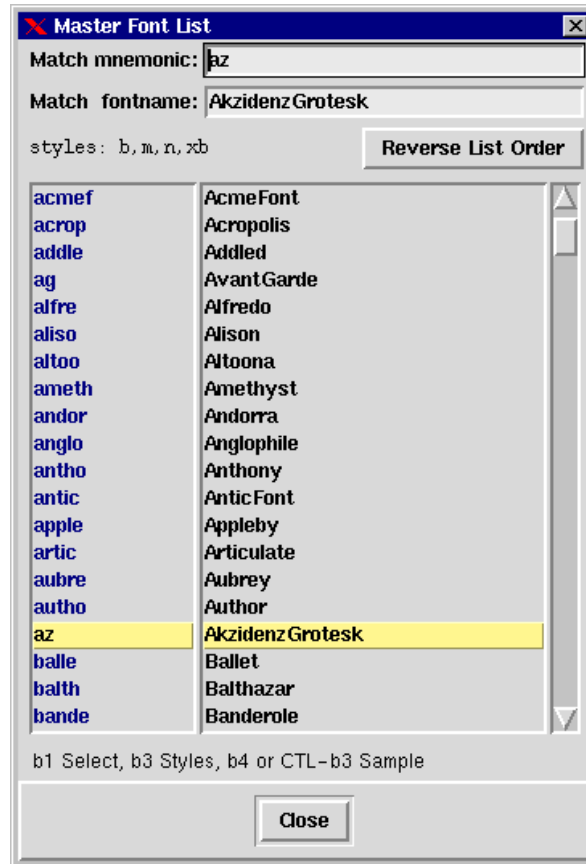


PS name	mnemonic	style	metrics
laser addle n	Addled		100 100 0 0
laser ag b	AvantGarde-Demi		100 100 0 0
laser ag bi	AvantGarde-DemiOblique		100 100 0 0
laser ag i	AvantGarde-BookOblique		100 100 0 0
laser ag n	AvantGarde-Book		100 100 0 0
laser alfre n	Alfredo		100 100 0 0
laser aliso n	Alison		100 100 0 0
laser altoo n	Altoona		100 100 0 0
laser ameth n	Amethyst		100 100 0 0
laser andor n	Andorra		100 100 0 0
laser anglo n	Anglophile		100 100 0 0
laser antho b	Anthony		100 100 0 0
laser antho bi	AnthonyItal		100 100 0 0
laser antic n	AnticFont		100 100 0 0
laser apple n	Appleby		100 100 0 0
laser artic n	Articulate		100 100 0 0
laser aubre n	Aubrey		100 100 0 0
laser autho n	Author		100 100 0 0
laser balle l	BalletEngraved		100 100 0 0
laser balle n	Ballet		100 100 0 0
laser balth n	Balthazar		100 100 0 0
laser bande n	Banderole		100 100 0 0
laser bandi n	Bandicoot		100 100 0 0
laser,sub1447 (30%)			

After a font has been processed and installed, it is no longer available in the new list, it would show up only under the All Fonts list.



Once you've installed the fonts you want, press Done button to exit the font installer. New fonts should be immediately available for use, and are automatically added to the Font Master List under Text Attributes.



### Miscellaneous Information Concerning Fonts

The font installer limits the styles, you must choose from a list. Because of this, if you really need more styles for one font, you must create a new mnemonic, and view/think of the extra styles as the "normal, bold, etc" of a different font.

This release of the font installation forces the use of "one-to-one mapping" translate table for new pi fonts, which means MECCA special character codes \032^ through \254^ for that font correspond one-to-one to the characters 32 through 254 in the font.

In previous MECCA releases, varying mapping schemes were used, resulting in confusing character call-out maps and non-interchangeable job files. Enforcing a standard way to get the pi characters removes those problems.

However, because of this, the font installer cannot be used, and will not let you, to re-install over existing fonts. **NEVER USE THIS FONT INSTALLER TO "ADD FONTS" WHEN YOU'RE BUILDING A "FRESH DISK" AS A REPLACEMENT DRIVE AFTER HARDWARE FAILURE, OR AS A WAY TO SET UP ADDITIONAL MECCA 20000 WORKSTATIONS.** You should always load from your backup. If you ignore this warning, all pi fonts you installed this way will use new translation map, all of your old jobs containing special codes for those pi fonts will get the wrong characters.



MECCA 2000 Type-1 installation does not permit re-installing any existing fonts. This has to do with translate tables: MECCA 2000 Type-1 installation will distinguish a Font as being one of 3 "types": standard roman font, standard roman font with euro character (character named "c157" exists in AFM), and pi font. Included in v2.10 is an x1 file for "std pi font" -- one to one mapping for characters 1 through 255 (e.g., \125^ calls for the character code 125 in the font), Type-1 Install will use this file if it detects the font being installed is a "pi font" (the AFM will say its encoding is font-specific).

This should have been the way pi fonts are treated, but was not the case in previous MECCA releases. Because of that, Type-1 Installation cannot be used to re-install an existing font.

Standard and pi font code charts are created at time of installation. Pickable code charts for users to easily obtain backslash special codes. Note that even though the user is asked to select a font (and style) before code chart is displayed, the selection does not result in a chart that shows the font face. The selection is used to navigate mnemonic/style disk structure to find the corresponding chart file.

Version 2.10 has replacement Fontbank font width tables, some x1 files, and additional template files (placed in M\_FONTS/fontinfo) for font installation use.

### **New additions, to M\_FONTS/fontinfo:**

hel.pfb, sym.pfb, zd.pfb -- std PFB files needed when building code charts.

pschart[1-3], pschartend -- template PS file sections needed to build PS file that is given to Ghostscript to produce a bitmap as the code chart.

std\_sym\_x1 -- reference x1 (one-to-one mapping) for pi fonts.

### **New xlate/laser/ge/n:**

the "x1.c157" and "xlextend.c157" files have been added. They differ from "x1" and "xlextend" on the c157 character alone.

### **Code Charts, they are gzip'd files placed in fontdata/laser:**

There are 2 std charts built, placed in ge/ directory. These charts are used for all standard encoding fonts, and differ only in the c157 character.

Each pi font has its own chart. The "mkcodechart\_all", part of v2.10 update procedure, checks through existing fonts and builds necessary code charts. But again, for a font having multiple styles, only one chart file is made for the "font".

Code charts are only for on-screen use; they never get downloaded to print devices.

### Some old files can be deleted, but only if the machine does not share M\_FONT data with MECCA III system:

The outlines/laser/\$FONT/ files that do not have ".olg" in their names are older format outline files and can be removed, now that MECCA 2000 uses .olg files only.

For each ".olg" font file, its corresponding data file in M\_FONT/actual can be removed. MECCA 2000 does not use any actual/ data if it finds .olg first. **Caution:** some fonts don't have olg at all, like Amgraf's old barcodes, pantos and borders. DO NOT remove actual/ directory as a whole.

## Installing TrueType Fonts

---

MECCA 2000 version 5.02 provides increased support for TrueType (TT) fonts.

According to *WikiPedia*, "TrueType has long been the most common format for fonts on Mac OS and Windows, although both also include native support for Adobe's Type 1 format and the OpenType extension to TrueType (since Mac OS X 10.0 and Windows 2000). While some fonts provided with the new operating systems are now in the OpenType format, most free or inexpensive third-party fonts use plain TrueType. "

### TrueType Requirements and Limitations:

Prior to installing an arbitrary TrueType font on to the MECCA 2000 system, there are some basic requirements. Several open-source resources are required to make TT fonts properly render on the display and print correctly.

- MECCA 2000's support of a TrueType font is understood to be MS TrueType (not the old Mac TrueType).
- TrueType fonts will be sent, at print time, as a Type 42 font per Adobe's standard.

**Note:** Most PostScript level-1, and some level-2, RIPs do not support Type 42 fonts. You must first determine whether your equipment handles such fonts. Generally, if the RIP is bona fide level-3, it can support Type 42 fonts. Otherwise, run a test and see.

- Rendering small type sizes and the display of font samples requires the "ttmkfdir" utility be installed.
- The required open-source software distributed and installed for font installation and processing:
  - lcdf-typetools to be located in /usr/local/bin
  - Freetype2 run-time library
  - libfreetype.so.9, to be located in /usr/local/lib
  - ttmkfdir font scaling utility

(See `/usr/mecca/misc/acknowledgment` for information about these open-source projects, that are not part of the MECCA 2000 software.)

- TrueType fonts are fully supported as a Type1, with the same special character mappings, along with support for MS symbol encoding, such as Wingding.

Additional technical details regarding TrueType support and legacy TT support related issues, can be found by reading the software releases notes located at `/usr/mecca/relnotes`.

### TrueType Installation Procedures

To begin the installation process of a TrueType font, first select from MECCA 2000's graphic design screen the Install Type-1 Font from the Project - Batch & More menu. The open files dialog will appear so you can browse for the TT font files. Change the File Type listings option to TT/OT Files, then browse into the directory holding your .TTF file(s).

Clicking on any one of the .TTF files will display a list of fonts that are located in the current directory, which have never previously been installed. You must assign an available font family and type style mnemonic to the TrueType font family. Click on the [Install] option to complete the installation procedure.

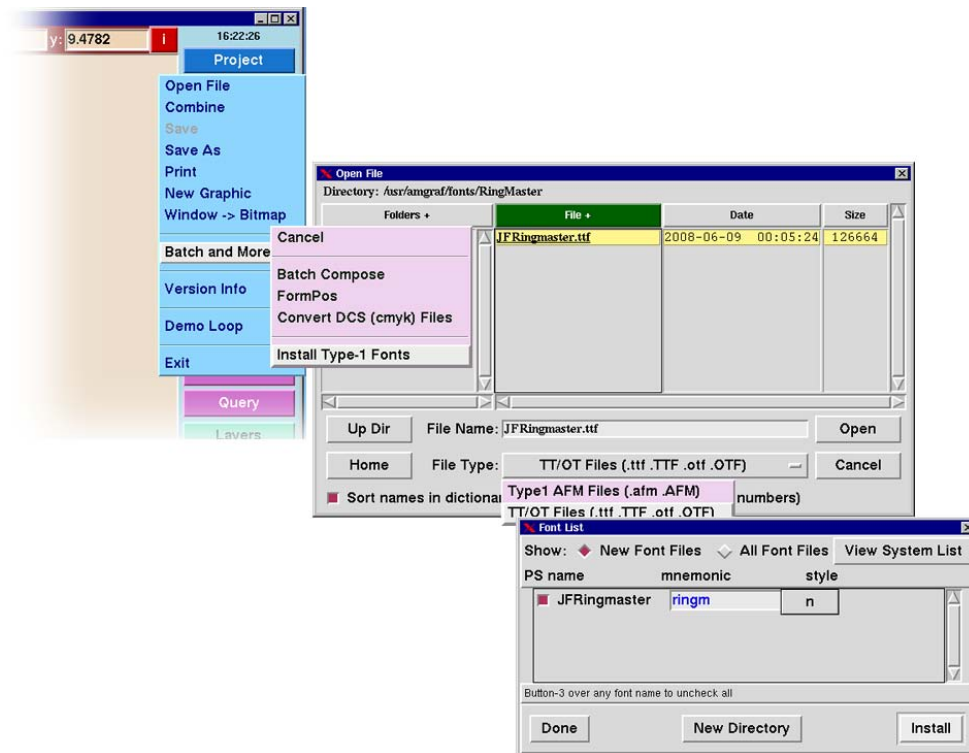


Figure 1 – The Opening and Processing Dialogs for TrueType

**THIS PAGE INTENTIONALLY LEFT BLANK**

## Chapter 4: Processing Font Outlines

MECCA 2000 uses outlines for text display and for the Area's option of {Get Text Outlines}. The Basic 35 Fonts and Amgraf's FontBank fonts have been pre-processed and are supplied.

Outline files (.olg) are generated through the following command line tool:

### Processing a Single Font

This option makes one .olg file by reading the /usr/mecca/fonts/fontdata/laser/ti/n PFB.

At the command prompt type in: **mkolg ti n [Enter]**

### Processing All Fonts

This option walks the entire /fontdata/laser directory and for each PFB found it makes a corresponding .olg file, if it doesn't exist.

At the command prompt type in: **mkolg\_all [Enter]**

**THIS PAGE INTENTIONALLY LEFT BLANK**

## **Chapter 5: Aborting MECCA**

If for any reason the login is hung or locked up, **[Ctrl]-[Alt]-[Backspace]** will abort all programs and logout of the current login.

When a program is frozen (such as GIMP, MECCA 2000, or the Nedit Text Editor), using the Kill option on the Desktop pop-up menu will close any program picked by its crossbones cursor.

**THIS PAGE INTENTIONALLY LEFT BLANK**



## Chapter 6: Using the Xterm Window

You can get to the Unix operating system by going to the Xterm Window, under Shell on the Start Menu.

This will take you to the \$-prompt within the login directory, which is usually /usr/amgraf. To become a root superuser, type in su [Enter], and the root password. This will give you a #-prompt.

Here you can run any shells which you have access to and any unix commands that you know. For example "man man". The Free BSD General Commands Manual is accessed through the command **man (command name)**.

Following are some commonly used commands:

### Line Printer Commands

The line printer command is **lpc**. To see the manual pages you can type in **man lpc**. The lpc options will require that you are at a #-prompt.

1. Printer status command will tell you if it is enabled, printing, and how many files in queue.

```
lpc stat all           All listed with printernames
lpc stat all | more   All listed with scroll
lpc stat printername Just that one listed
```

2. Disabling the Queue

```
lpc down printername
```

3. Enabling the Queue

```
lpc up printername
```

4. Restart Queue

```
lpc restart printername
```

5. Get Job # and Remove File from Queue

```
lpq -P printername      ---will give you Job #
lprm -P printername Job# ---will remove Job from queue
```

**THIS PAGE INTENTIONALLY LEFT BLANK**

## Chapter 7: Software Control Files for Spot Color

The color software control files are found in the directory */usr/mecca/color*.

### Gray Color Table Format

The format is easily understandable. It is */fcp01.gray* and is illustrated below:

```
xFCP
x      1      2      3      4      5      6
x2345678901234567890123456789012345678901234567890
PMS #  CYAN  MAGENTA  YELLOW  BLACK  ANGLES
x-----
7      0      0      0      0      -1.0   -1.0   -1.0   45.0
600    0      0      0      0      -1.0   -1.0   -1.0   45.0
601    0      0      0      1      -1.0   -1.0   -1.0   45.0
602    0      0      0      2      -1.0   -1.0   -1.0   45.0
603    0      0      0      3      -1.0   -1.0   -1.0   45.0
604    0      0      0      4      -1.0   -1.0   -1.0   45.0
605    0      0      0      5      -1.0   -1.0   -1.0   45.0
606    0      0      0      6      -1.0   -1.0   -1.0   45.0
607    0      0      0      7      -1.0   -1.0   -1.0   45.0
608    0      0      0      8      -1.0   -1.0   -1.0   45.0
609    0      0      0      9      -1.0   -1.0   -1.0   45.0
610    0      0      0      10     -1.0   -1.0   -1.0   45.0
```

The first column designates the "color number" used when setting or changing FCP attributes. The 3-digit decimal numbers range from 600 to 700.

**IMPORTANT:** Color number zero (0) is always 100% black. This is our default color number.

### Dot Angles

The significance of a dot angle value is meaningful only if needed changed by a particular printshop operation. Ordinarily, illustrators or operators should not be concerned. If a change needs to be made, you may edit the file */color/fcpangle.gray*. This file gives Black the angle of 45 degrees.

### Layer Color Tables

The MECCA software for spot color output relies on a layer color table to display color.

The variable *LAYERCHART* defines the reference to a layer color table file named */color/layer\_color01*. The layer color table file controls the display of the color.

---

## Chapter 7: Software Control Files for Spot Color

---

When MECCA is started the `layer_color01` table is loaded, and those colors defined in the table `/layer_color01` are displayed.

The supplied layer color table file, `/color#47;layer_color01`, contains CMYK color definitions to create the display. You may edit this file, or create your own file of a different name, by using a text editor.

### Color Table Format

The format is easily understandable. If you look up `/layer_color01` (do this by typing at the `$`-prompt: `more /layer_color01 [Enter]`). The file is illustrated below:

xLYR	1	2	3	4	5	6
x2345678901234567890123456789012345678901234567890						
LAYER#	PMS #	CYAN	MAGENTA	YELLOW	BLACK	COMMENT
x-----						
1	166	0	80	100	0	
2	700	0	0	0	100	
3	320	100	0	30	0	
4	700	0	0	0	100	
5	700	0	0	0	100	
6	232	0	100	0	0	
7	102	0	0	70	0	
8	266	100	80	0	0	
9	280	100	60	0	20	
10	300	100	40	0	0	
11	307	100	10	0	0	
12	116	0	20	100	0	
13	151	0	70	100	0	
14	375	50	0	100	0	
15	403	40	30	50	30	
16	563	50	0	30	10	

It is important to note that there are seven fields in every line of this file. These are defined as follows:

1. The first column designates the "layer number".
2. The second column designates the PMS number assigned. If the next four fields are present they will be used. If not, it will look at the file `/fcp01` for the CMYK percentages.
3. The third column represents the Cyan value. This is a number between 1 and 100, that is the percentage of cyan for a 100% black component on that layer. The fourth column is the Magenta percentage and the fifth column is the Yellow percentage, with the sixth column being the Black percentage of that color. The seventh column is an optional comment stating the color name.

## Chapter 7: Software Control Files for Spot Color

---

To create a color, you enter the percentage of the respective primary color as it comprises the color defined by that color number. For example, if you have a color that has 10% Cyan, 10% Magenta, 50% Yellow, and no Black. You normally reference that color as the number 11 and it will always be placed on layer 2. The line that starts with 011 should look like the following:

LAYER#	PMS #	CYAN	MAGENTA	YELLOW	BLACK	COMMENT
2	011	10	10	50	0	

You may optionally append a short comment on each line at the end stating a color name or what that color is.

Now, anything placed on layer 2 will be displayed as a color 11. You will not ask for color 11, but will ask for percentages of black. A 50-percent screen would be 650, but would display as a 50-percent screen of color 11, only because it is on layer 2.

The color monitor display has been modified to show on the screen the colors that will be produced by the various layers. The layer\_color descriptions are stored with a drawing.

For more information refer to [Change] {Change Attributes} {Change Colors} {Color Table Options}.



## Chapter 8: UTF-8 Text Encoding Conversion Utility

MECCA already handles input text characters in ISO-8859-1 encoding. However, in certain situations where the text data was originated elsewhere, there can be difficulties for the MECCA user, when "special characters" such as copyright, trademark, left and right double-quote, etc. are concerned.

MECCA now provides an UTF-8 input text encoding conversion utility, **unimap**, to help customers import text data that was prepared on non-MECCA platforms, such as MS Windows. "unimap" is automatically invoked by "bcompose", MECCA Batch Compose, and MECCA Text Input Read-in-a-File options.

You can also use the command as a standalone conversion utility:

**unimap <inputfile >outputfile**

A typical situation involves a .DOC file made on Windows. To import such text for composition on MECCA, prepare the text file in the following manner:

If you have MS Word on Windows:

Open the .DOC file in Word, then Save As Text, select Custom Encoding, and then choose UTF-8 Encoding.

If you do not have Word, use Wordpad:

Open the .DOC file with Wordpad, save as "Text .txt in Unicode"; then open the saved file with Notepad, save as "Text" but now in "UTF-8 encoding".

For Unicode, Wordpad only saves in 2-byte format (each character is written as a 2-byte value), Notepad can save in UTF-8 (in which characters occupy variable number of bytes, but ASCII characters are preserved as they are), hence the two-step process.

MS text editors such as Notepad/Wordpad will write what is known as BOM (Byte Order Mark) at the beginning of a Unicode text file. The "unimap" utility recognizes standard UTF-8 BOM directly.

Note that text files marked by BOM, cannot be brought over to MECCA and then concatenated together: BOM will disrupt text data content.

Some text editors can write a text file in UTF-8 format without writing any BOM (e.g., PSPad does this). With this type of text editor, insert this as

the very first line in your text mark-up file:

```
\* charset=utf-8 \*
```

which tells "unimap" that the rest of the input file is text data in UTF-8 encoding. But you need to ensure that, with the editor tool you are using, either:

- a. the text encoding is set to UTF-8 before saving the file (e.g. for PSPad, it is under the Format menu), or
- b. select UTF-8 format in its "Save as" dialog.

If you're preparing text data on Windows, and you know there are special characters in use, you can always mark the very first line as:

```
\* charset=utf-8 \*
```

regardless your editor tool will write BOM into the saved UTF-8 encoded file.

This approach also works when you're using a text editor on Unix or MECCA system, and it lets you enter Unicode characters and will save the data in UTF-8 encoding. Such tools normally do not write any BOM, and so the "first line comment" will be your only way to inform MECCA that the text characters in the file are in UTF-8 encoding.

### **Mapping Unicode Character to MECCA Special Character:**

Actually, the unimap utility does not have any built-in mapping. It uses an external mapping file for this:

```
/usr/mecca/cfg/unimap
```

which is a plain text file (that file's characters MUST be in ASCII codes), listing Unicode character, and its replacement string, one pair per line.

For example:

```
2013 \081^
```

will map Unicode character U+2013 (the "en dash"), to special character \081^ in MECCA. Some other commonly used codes, like "left double quote", dagger, etc. can be listed as well. The supplied map is good as a starting point, customers will no doubt add to it over time, as the situation calls for (whenever "unimap" encounters a Unicode character not listed in the map file, it will signal an error).



### The syntax for `"/usr/mecca/cfg/unimap"` file:

`'#'` starts a comment; comment and blank lines are ignored;

first column lists the Unicode character code: must contain at least 4 hexadecimal digits -- normally a Unicode character is indicated as `"U+xxxx"`, list the `"xxxx"` part here without the `"U+"`;

at least one space character must follow the digits, it signals the end of the code digits;

the next non-space character on the line, starts the "replacement string"; this string runs to include the last non-space character before either a `'#'`, or end-of-line. That is, the "replacement string" can contain spaces.

Some examples:

```
# this is a comment: do not list normal ASCII characters
2009  @>T   # thin space
2022  \231^ # bullet
201c  \117^ # left double quote
```

### Miscellaneous Information

Please note Unicode standard does not assign any valid code for Dingbat characters, but provides certain code ranges "for private use" (E000 - F8FF), dingbat codes should fall in those areas (albeit not for interchange). You can consult Unicode.org character names at:

*<http://www.unicode.org/Public/UNIDATA/NamesList.txt>*

for character code information.

For illustrative purpose only -- not related to real-world codes -- suppose you found (by looking at it on screen in MS Word), that a right-arrow is in the document, and it is `"U+F1A6"` ("`unimap`" will complain and tell you so if `"F1A6"` isn't listed in the map file), you can add this pair to your system's map file:

```
F1A6  \sf^\cf zd^\453^\rf^ # seems to work for word
```

to map the `U+F1A6` to ZapfDingbat character `\453^`, the right-pointing arrow. The SF (save font) and RF (restore font) commands bracket `"\cf zd^\453^"` so that this mapping works with any current font setting and does not change it.

Again, please note that Dingbat characters don't have fixed Unicode assigned to them. So you may find the same right-arrow being written in different codes by different software, and know it is possible to have different codes that map to the same replacement string in your map file. When such mapping is listed, by all means include some comment, at least to tell for what situation the code mapping was made, for your own future reference.

While it is possible for different codes to map to the same replacement, there cannot be "same code that maps to different replacement": if this happens in your map file, the last occurrence of the code mapping will be used, and "unimap" does not treat that as an error.

## Index

**Aborting MECCA 91**

**Angles, Dot 94**

**Assign Font Mnemonic, Style 82**

**Basic 35 PostScript Fonts 10**

**Checking Dimension Limitation 4**

**Checklist Scanning Sections 3**

**Color**

Layer Tables 95

Table Format 95, 96

**Commands, Line Printer 93**

**Control Files, Spot Color 95**

**Controlling Default Size, Pantograph 1**

**Custom Pantograph Examples 7**

**Default, Control Pantograph Size 1**

**Dimension Limitation Problems 4**

**Directories**

Creating for Files 1

Valid Filenames 1

**Dot Angles 95**

**File**

Creating Directories 1

Open AFM Font 81

Software Control 95

Valid Names 1

**Font**

Fontbank

Creative Display

Families 52

Individuals 55

UpperCase Only 67

San Serif

Individual Fonts 44

Standard Book Families 33

UpperCase Only 65

Script and Calligraphy Fonts 46

Serif

Individual Fonts 26

Standard Book Families 16

UpperCase Only 63

Sorted by FontBank Name: 71

Sorted by Similar To: 73

Miscellaneous Information 84

Mnemonic and Style 82

Open AFM File 81

Processing

All 89

Outlines 89

Single 89

TrueType, Installing 86

Type-1, Installing 81

**Format**

Color Table 96

Gray Color Table 95

**Installing Fonts 81**

**Layer Color Tables 95**

**Limitation Problems, Pantograph 4**

**Line Printer Commands 93**

**Logo Panto Processing 1, 6**

**MECCA, Stopping System 91**

**Miscellaneous Font Information 84**

**Open AFM Font File 81**

**Outlines, Font Processing 89**

**Pantograph**

Control Default Size 1

Examples 7

Processing 1, 6

Scanning Sections 2

Checklist 3

**PostScript Fonts 10**

**Printer Commands 93**

**Processing Fonts**

All Fonts 89

Font Outlines 89

Logo Panto 6

Single Font 89

**Scanning Sections for a Pantograph 2**

**Single Font Processing 89**

**Size, Control Pantograph 1**

**Software Control Files for Spot Color 95**

**Spot Color, Software Control Files 95**

**Stopping the MECCA System 91**

**Style, Font Mnemonic 82**

**System, Stopping MECCA 91**

**Table Format, Color 95, 96**

**Type-1 Fonts, Installing 81**

**TrueType Fonts, Installing 86**

**"unimap" command 99**

**Using Logo Panto Processing 1**

**Using Xterm Window 93**

**UTF-8 Encoding 97**

**Valid Filenames 1**

**Xterm Window 93**