

# Amgraf's OneForm Manager Lite Software

AMGRAF SOFTWARE OPTION  
ONEFORM PRODUCT FAMILY

Smart organizations can easily deploy HTML and/or PDF electronic forms with Amgraf's free OneForm™ Manager Lite (OML) software. OML catalogs HTML and PDF e-forms by classification and date, and provides an efficient method to distribute, organize, and manage hundreds of different electronic forms within an enterprise setting. OML-compatible electronic forms can be created in minutes with Amgraf's OneForm Designer Plus forms design package. Through OML, users can keep a secure local copy of every electronic form they fill out. When desired, users can locally open, update, and submit filled forms to Internet servers for centralized data collection.

OML combines a personal web page server with a forms file manager, and runs on a Windows client computer. Within OML, new unfilled e-forms are saved as *containers* for data, while *form fill data files* are separately stored as XML-tagged text. When a user exits after filling-in an e-form, the e-form field data is automatically extracted, optionally encrypted, and locally stored. When a user clicks to open a filled e-form, the empty base e-form is retrieved and dynamically merged with the selected fill data to display as a populated, fillable e-form.

E-forms from many sources can be organized and cataloged by OML on an end-user's personal computer. OneForm Manager Lite is available free to end-users and can be downloaded by going to Amgraf's web site [www.amgraf.com](http://www.amgraf.com). Amgraf also allows customers to redistribute OML under certain conditions. Please contact an Amgraf representative for details.



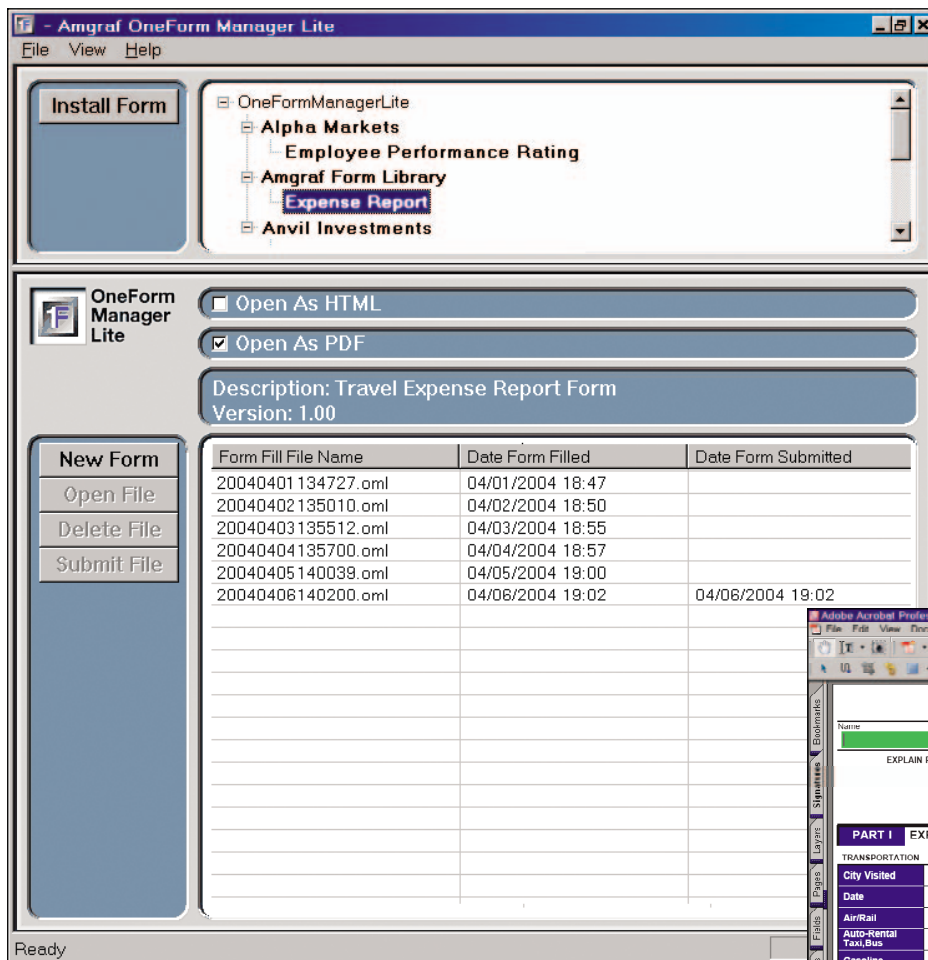
The OML Button Submits  
Fill Data to a Personal Server

OML is the perfect e-forms management companion to other browser-based reader, viewer, and player programs.

## Find, Open, and Close E-forms with Ease

The OML interface consists of two windows. The top window shows the list of e-forms installed on the OML user's personal computer, and the bottom window shows all instances of a particular filled and/or submitted e-form. To open an empty e-form, the user locates the desired form from the top list, selects HTML or PDF, and clicks the "New Form" button. To open a previously filled e-form, the user selects the fill file name from the bottom list, selects HTML or PDF, and clicks the "Open File" button.

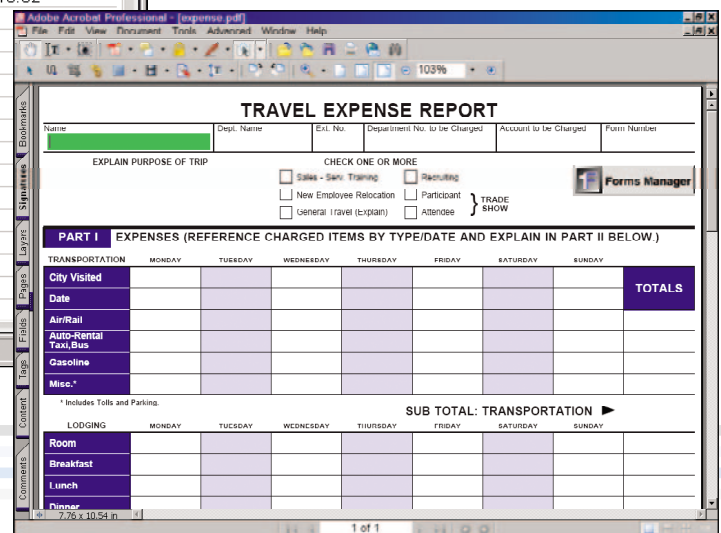
OML e-forms behave exactly as they would if opened from a web site. The e-form is filled out by keying data into the fill-fields, and closed by clicking the OML button.



The OML User Interface Shows a List of Ready-to-Open Electronic Forms and Fill Files

## OneForm Manager Lite Technical Details

OneForm Manager Lite consists of a lightweight "HTTP Listener" program, based on the popular Apache web server. When OML is started, an unused communications port is allocated at the localhost loopback address, and the *listener* then waits for data. The OML user finds and opens e-forms through the OML graphical interface. On each e-form, there is an OML Button that is effectively a "Submit Data" button. When clicked, the name/value pairs from the fill-fields are encrypted and passed to the *listener*, along with the fill file name. The encryption key is computed from characteristics that are unique to each specific e-form. This prevents the OML button from being reused on any other form, and the OML button fails to work if the e-form has been altered in any way, other than by the form originator using OneForm Designer Plus.



A New Fillable PDF Form is Opened

## OneForm Designer Plus for Forms Design

Amgraf's OneForm™ Designer Plus is the ideal e-forms design environment for developing fillable HTML and/or PDF forms. New forms can be composed from a blank page, and existing PDF forms can be imported and edited. When a form is created or imported into OneForm Designer Plus, it can be given OML properties by using the Form Preferences/Meta Data panel. Within this panel, the form is assigned a Globally Unique Identifier (GUID), and given a Classification and Version Number. Forms are also given a Name, Number, Description, Category, and Department. In addition, keywords that are useful to help find the form can be assigned.

OneForm Designer Plus – Forms Meta Data Input Panel

*E-Forms can be Distributed on CD's or via the Internet*

*OML Users can Download E-Forms from Multiple Web Sites*

## Automated E-Forms Distribution via the Internet

After choosing the source for installing new e-forms, the end-user simply selects the desired e-form(s) from the enterprise server's Form Distribution page then clicks the Install button. E-form installation is immediate and seamless, and upon completion, OML's list of available e-forms is updated and ready to use.

You can download your free copy of OML today by going to Amgraf's web site at [www.amgraf.com/pages/omlinfo.html](http://www.amgraf.com/pages/omlinfo.html).

Next, the OML button is placed onto the form. The form is generated and saved as a fillable HTML and/or a fillable PDF. When both e-forms formats are created, they can be used interchangeably. The resultant e-forms are ready to distribute on CD's, or via the Internet, so that they can be installed and managed with OML on an end-user's PC.

## Getting Started with OneForm Manager Lite

The first step is to install the OneForm Manager Lite software on a client PC. OML is published as a downloadable setup file that self-installs on a Windows 2000/XP PC within a few minutes. This step should only need to be performed one time. Once OML is loaded on the PC, any OML-compatible form from any source will be usable.

Because the end-user must first install OML on his/her personal computer to take advantage of OML-compatible forms, the ideal situation is for clients to become aware of OML through a proactive effort by the forms originator. After OML is installed, it can be launched through a standard Windows desktop icon, and the end-user can then download the forms to be managed, and insert them into his/her personal forms catalog.

## Installing New E-forms on the Client PC

E-form installation is easy. The OML client simply clicks the "Install Form" button and selects the *Install from Web* or *Install from CD* option.

The *Install from Web* option presents a drop-down list of e-forms servers known to the client. Typically, the e-form server list will have the client organization's enterprise server name as the first choice. Other server names are automatically added as they become available to the client through e-mail notices or web browsing to other e-forms sites.

OneForm Manager Lite Streamlines E-Forms Distribution

**AMGRAF**  
SOFTWARE TECHNOLOGY

1501 Oak Street • Kansas City, MO 64108-1424  
Phone: (816) 474-4797 • Fax: (816) 842-4477  
E-Mail: [info@amgraf.com](mailto:info@amgraf.com) • Internet: [www.amgraf.com](http://www.amgraf.com)



The artwork and color separations for this brochure were created on the MECCA™ 2000 Integrated Electronic Publishing System. MECCA and OneForm are trademarks of Amgraf, Inc. Other brands and product names are trademarks or registered trademarks of their respective holders. The above specifications are subject to change without notice.