

Adobe® Portable Document Format (PDF) is widely used for electronic document distribution. PDF is a universal file format that preserves the fonts, formatting, graphics, and color of the source document. PDF files are compact and can be shared, viewed, navigated, and printed exactly as intended by anyone with the free Adobe Reader software. Business forms are now available from many web sites as downloadable printer-friendly PDF files. Amgraf has developed an easy way to make these forms fillable and database-connected. With Amgraf OneForm Designer Plus and the PDF Forms Generator Module, any PDF file can quickly be fielded to support data collection and data presentation from an Internet web site.

The I-forms conversion process is easy. Using OneForm Designer Plus, a standard PDF file can be imported and displayed. Form fill fields are then added, field attributes are specified, and JavaScript coding can be inserted for form customization, intelligence, and computation. Two PDF file generation methods are provided. A composite PDF form that is ready to deploy can be instantly produced. Alternately, just the JavaScript coding and form fields can be saved as a second PDF file ready to overlay on the original using the Adobe Acrobat 5.0.5/6.0 software. Both methods result in an Internet-ready fillable PDF form that works with the free Adobe Reader. An HTML version of the composite fillable form can also be generated by OneForm Designer Plus.

To host fillable I-forms on a web site you must have custom CGI scripts and databases. All the required scripts are automatically generated by OneForm Designer Plus as the form is created. You can test real HTML and PDF I-forms today by visiting www.amgraf.com.

Converting a PDF File to a Fillable, Database-Connected PDF Form for the Internet



Create Form Fields and Internet Server Scripts with OneForm Designer Plus

OneForm Designer Plus simplifies PDF form fielding and the assignment of validation attributes through the *autofield* tool. Field positioning is controlled through the *Position Assistant*, so that every form field is exactly the right size and located exactly in the space available. After the fields are created, the *I-form Server Preferences* panel quickly generates all the server CGI scripts necessary to manage databases, save and open I-forms, find and list saved I-forms, and to perform XML data exchanges. Following are the steps to create an Internet-ready PDF form with fill, print, save, and recall capabilities:

1. Import Original PDF Form for Field Positioning
2. Add Fillable Form Fields and the Submit Button
3. Specify Field Types, Tab Order, Database Connections, Custom JavaScript Calculations, etc.
4. Save Form with Fields (or just Fields) and JavaScript code as a PDF File
5. (Optional) Generate HTML version of Fillable Form
6. Generate CGI Scripts and Copy all Files to an Internet Server

The screenshot shows the OneForm Designer Plus software interface. The main window displays a form titled "APPLICATION FOR EMPLOYMENT". The form includes sections for "PERSONAL INFORMATION" and "FOR OUR REFERENCE". The "PERSONAL INFORMATION" section contains fields for Name (Last, First, Middle), Social Security Number, Current Address, Former Address, Home Telephone, and Other Telephone. The "FOR OUR REFERENCE" section contains fields for Position Desired, Salary Desired, Date Available, Ever Work Here Before?, Ever Apply Here Before?, Related to Anyone Here?, Are You Employed Now?, Will Present Employer Give A Reference Now?, and In Case of Emergency Contact (Name, Relationship, Telephone). The software interface also shows a menu bar, a toolbar, and a status bar.

Add Form Fields Using OneForm Designer Plus

The screenshot shows the "IForm Preferences" dialog box. It has several tabs: "Specify Save Script", "Specify Open Script", "Specify Search Form", "Specify List Form", "Specify IForm Button", and "Gen Scripts". The "Specify Save Script" tab is selected. It contains sections for "Select Scripts to Generate" (with checkboxes for Database Create/Drop Scripts, Database Save Script, Database Open Script, Search for Record Script, Diagnostic Scripts, Delete Record Script, and Helper Index Pages), "Open/Save Options" (with checkboxes for Allow Record to be Replaced, Always Save as New Record, and Open Read Only), "Form Open Option" (with checkboxes for HTML Open Option, PDF Open Option, and XML Open Option), "Code Generation Options" (with checkboxes for InLine Code Generation, Use Code From Modules, and ASP (Javascript)), and "Unix Line Endings". There are also fields for "Server Path to CGI", "Path To Database Login", and "Path To Utility Packages". A "Generate Script(s)" button is at the bottom. The dialog box also has "Close", "Cancel", "Apply", and "Help" buttons.

The web server scripts are automatically generated for rapid deployment of database-connected PDF Forms for an Internet server. Windows and Unix server technologies installed with SQL Server 2000, Oracle, and/or MySQL databases are fully supported.

Combine Form Fields with Original PDF Form using Adobe Acrobat 5.0.5/6.0

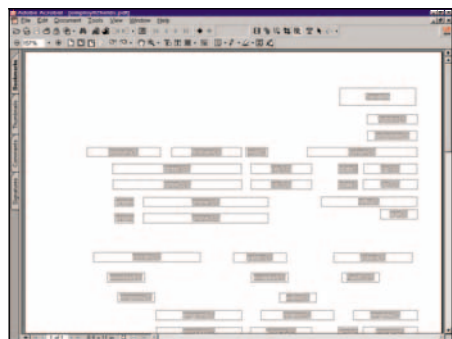
If you choose to update your existing PDF forms, the best method is to utilize OneForm Designer Plus to create an overlay with the form fields. After the form fields are generated and saved as a second PDF file, Adobe Acrobat is used to merge them with the original PDF form. The two files are combined into a composite fillable PDF form ready to deploy via the Internet. If necessary, Acrobat can also be used to make minor changes to the PDF form and form fields. Following are the steps required within Adobe Acrobat to complete the development of a fillable PDF form using the overlay method:

1. Open Form Fields PDF File generated by OneForm Designer Plus Software
2. Click the Acrobat Form Tool Button (Version 5.0.5) or the Tools/Advanced Editing/Select Object Tool (Version 6.0)
3. Click the Document menu then click Pages - Replace
4. Open the Original PDF Form File
5. Click OK to Combine the Original PDF Form with the Form Fields
6. Select All Fields (Ctrl-A)
7. Use the Arrow keys to Move Fields to their Exact Positions then Deselect All
8. Save the file as a New Fillable PDF Form then Copy the PDF File to your Internet Server



No filler-license software or license fees are ever required to use electronic and Internet forms created with Amgraf OneForm Designer Plus. PDF forms are compatible with the free Adobe Reader, and can also be used with Adobe Approval if desired.

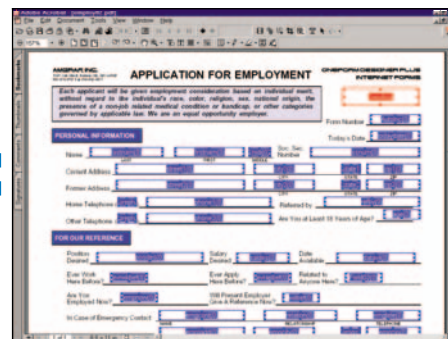
Note: Acrobat's Internet Preferences should be set to allow fast web view.
Acrobat 6.0 users: For best results always save PDF files with the Reduce File Size option compatible with Acrobat 5.0 and later.



Form Fields PDF Generated by OneForm



Original PDF in Adobe Acrobat 5.0.5/6.0



Fillable PDF Form Ready for Internet

Create Databases and Link PDF Forms to Web Pages

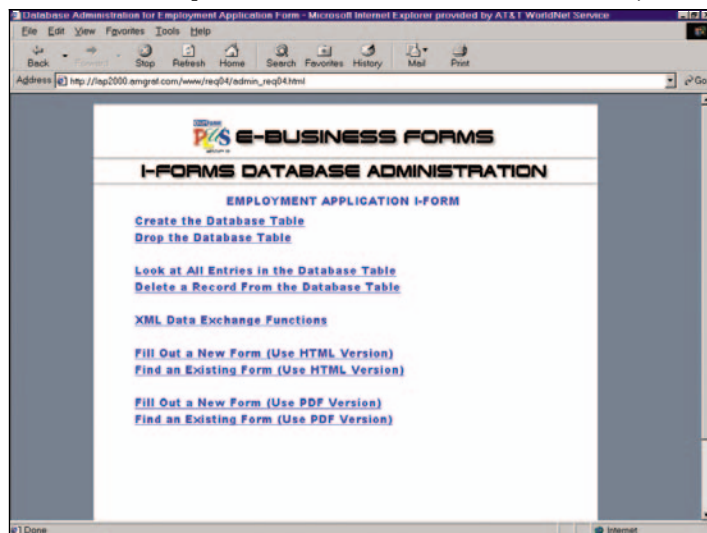
A complete set of HTML administrative pages are generated along with the CGI scripts to manage databases associated with the PDF form, and to test the filling and recall functions. The CGI scripts are compatible with relational databases from Microsoft, Oracle, and MySQL, and with Microsoft and Unix web servers. Once the testing and verification is completed, the PDF I-forms can be linked to your web pages by copying the sample URL links. Following are the steps to deploy the PDF form on the Internet:

1. Open I-Forms Database Administration Page
2. Run Database Initialization and Connection CGI Scripts
3. Copy Sample Links to Desired Web Pages

All of the server CGI scripts required to make your PDF form usable on the Internet are automatically generated by OneForm Designer Plus. The Administrator Page simplifies the testing and deployment of database-connected PDF forms. For large-scale forms management, Amgraf also offers a complete Internet Forms Portal package with e-commerce, database integration, and workflow capabilities.



1501 Oak Street • Kansas City, MO 64108-1424
Phone: (816) 474-4797 • Fax: (816) 842-4477
E-Mail: info@amgraf.com • Internet: www.amgraf.com



I-Forms Database Administration Page